



Radio Remote Control (RRC) kits

Retrofit kits for Epiroc Scooptram underground loaders



Radio Remote Control for safe operations

Radio Remote Control (RRC) for line-of-sight operations, offers an effective way of working inside stopes and areas exposed to risks of falling rock. When personal safety cannot be guaranteed, RRC enables an operation to take place from a safe distance.

Additional Video Assist Unit available for certain models.



Powered by regular rechargeable AA batteries, can operate a full shift.

Safe, ergonomic and efficient to use.

Safety classified, approved by CE, FCC and IC.

+ Main benefits

Keep a safe distance when operating.

Easy to use and reliable system.

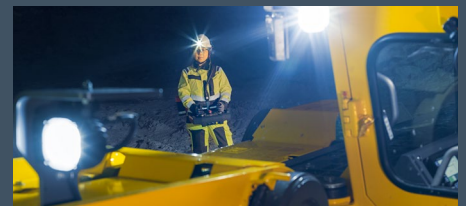
Low weight and an adjustable harness provides an ergonomic, correct and comfortable working position.



Applicable hydraulic and electric interfaces are available.



The Video Assist Unit can be configured with RRC for special Scrooptram models.



The operator can stand a safe distance away, up to at least 60 meters continuing to muck until the stope is empty.

Part numbers and technical specifications

Part numbers

Model	Video assist	Hydraulic interface	Electric interface	Additional information
Scooptram ST7	5580108409 (Canopy) 5580107715 (Cabin)	Not required	5580105424	To be used when machines has the new RCSOS display, RCS Rel 4.13 or higher
			5580101490	To be used when the machine has the old RTOS display, RCS Rel lower than 4.13
Scooptram ST7LP		Not required	5580105916	To be used when machines has the new RCSOS display, RCS Rel 4.13 or higher
			5580026230	To be used when the machine has the old RTOS display, RCS Rel lower than 4.13
Scooptram ST14	5580108323	Not required	5580105352	To be used when machines has the new RCSOS display, RCS Rel 4.13 or higher
			5580101597	To be used when the machine has the old RTOS display, RCS Rel lower than 4.13
Scooptram ST18	5580113670	Not required	5580105799	To be used when machines has the new RCSOS display, RCS Rel 4.13 or higher
			5580082298	To be used when the machine has the old RTOS display, RCS Rel lower than 4.13
Scooptram ST1030	5580110345	5575398400	5580103882	For machines with higher machine item number then 8997 6303 00
			5580018905	For machines with electrical system 5580 0170 76, 5580 1027 56 or 5580 1047 61
			5580008583	For machines with electrical system 5580 0067 28
Scooptram ST2G		5580018193	5580018195	For machines with Cummins engine
		5575485600	5580008800	For machines with Deutz engine
Scooptram ST3.5		5580008335	5580014286	
Scooptram ST7 10 Canopy/ ST 7 10 Cabin		5572758500	5580007849	
Scooptram ST8B		5574498200	5580008498	
Scooptram ST1520		5575461600	5580008243	
Scooptram ST1530		5580015773	5580012975	
Scooptram ST14 SG			5580108450	RRC Recovery available: an option for automated Scooptram. Operators can extract the rig if get stuck in a stope due to rock fall or similar.
Scooptram ST18 SG			5580114920	RRC Recovery available: an option for automated Scooptram. Operators can extract the rig if get stuck in a stope due to rock fall or similar.

Note: Check fire and tow hook are highly recommended safety options. If your loader is missing these options, please contact your local Epiroc representative and order the complete RRC kit including check fire and/or tow hook.

United in performance. Inspired by innovation.

Performance unites us, innovation inspires us, and commitment drives us to keep moving forward. Count on Epiroc to deliver the solutions you need to succeed today and the technology to lead tomorrow.
epiroc.com

