

Epiroc West Africa

Your productivity partner for mining & infrastructure industries in **West & Central Africa**



From Atlas Copco to Epiroc - A new company with a long history.

Change brings opportunities. Epiroc was formed to be an even stronger partner for you. It is a new company, but with 150 years of experience.

Epiroc's history began in 1873 when the company – then called Atlas – was founded in Stockholm, Sweden. **Epiroc** and **Atlas Copco** share their history until June 18, 2018, when Epiroc was distributed to Atlas Copco's shareholders and became a stand-alone listed company.

Atlas Copco's mining and construction business has become Epiroc. Built on Atlas Copco's proven expertise, quality and performance. With the same people and a bold new drive to support your success, we are ready to take our best and make it even better for you.

Becoming Epiroc allows us to collaborate closely with mining, infrastructure and natural resources customers. As Epiroc, we can bring new solutions to the market faster, and create the best product offering for your needs.

Above all, our mission is to drive the productivity and sustainability transformation in our industry. We will achieve it by delivering the innovations you need when you need them, leading development in automation, and exceeding your expectations with passion and commitment.

We never stop looking forward, and we are here to stay and grow.



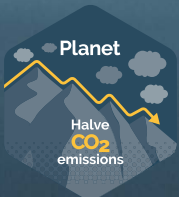


Drive the productivity and the sustainability transformation in our industry.

Just like our customers, we have a high ambition level when it comes to sustainability. We always think of safety and reduced environmental impact when we develop new products. In fact, our innovation agenda goes hand in hand with our customers' sustainability agenda.

We see sustainability as a long-term growth driver and a competitive advantage. In 2020, we set our long-term **sustainability goals for 2030** that support the **Paris Agreement** and the **UN 2030 Agenda** for Sustainable Development.

The goals include no work-related injuries and to halving CO₂ emissions from operations, transport as well as from machines sold. The use phase of our equipment represents the majority of our CO₂ impact, so that aspect is especially crucial. In addition, we also have put strong focus on adherence to our Code of Conduct. Last, but not least, we have the ambition to significantly increase the gender diversity and we have set an ambitious goal to double the number of women in operational roles.



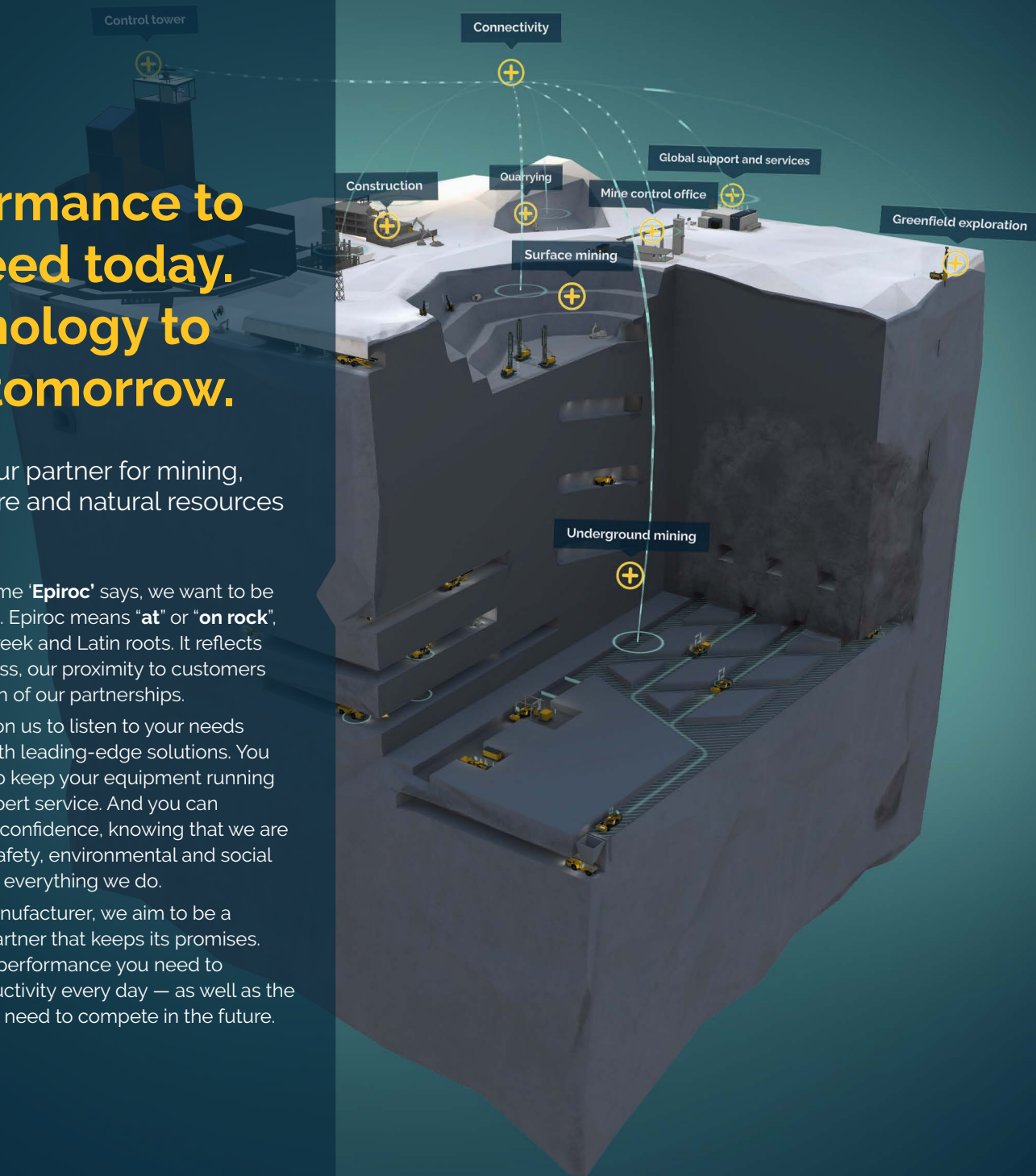
Performance to succeed today. Technology to lead tomorrow.

Epiroc is your partner for mining, infrastructure and natural resources equipment.

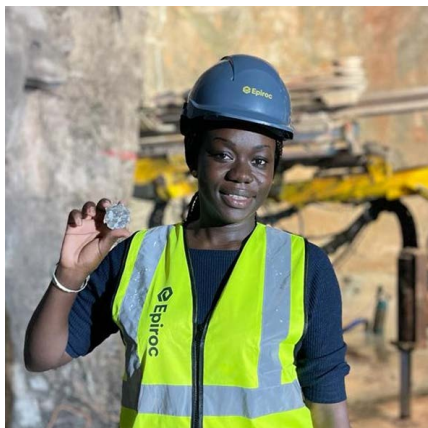
Just like our name '**Epiroc**' says, we want to be on top of things. Epiroc means "**at**" or "**on rock**", coming from Greek and Latin roots. It reflects our core business, our proximity to customers and the strength of our partnerships.

You can count on us to listen to your needs and respond with leading-edge solutions. You can call on us to keep your equipment running reliably with expert service. And you can choose us with confidence, knowing that we are committed to safety, environmental and social responsibility in everything we do.

More than a manufacturer, we aim to be a collaborative partner that keeps its promises. We deliver the performance you need to maximize productivity every day — as well as the technology you need to compete in the future.



Epiroc in West & Central Africa.



When it comes to mining and construction, we're able to offer a wide range of capital equipment that fulfils a variety of needs in the industry. We supply an extensive range of drill rigs for surface, underground and exploration applications; as well as trackless equipment such as load-haul-dumpers and trucks, and development drill rigs for underground use.

In **West Africa**, we operate through four (4) customer centers located in Ghana, Mali, Burkina Faso and Ivory Coast.

We have region-wide presence with business partners in most of all countries.

Each customer center has a dedicated service workshop and warehouse (normal and bounded) in order to deliver world-class product and service solutions for sustainable productivity.

A seamless and inclusive collaboration across borders is our way to get ahead of the competition. We collaborate internally within our teams and between other teams and divisions globally to get excellent networks and the best business results for our customers. You can count on us to deliver the solutions you need to succeed today and the technology to lead tomorrow.

Our history milestones in West Africa

- **1992** : opening Atlas Copco Ghana Ltd as a first customer center for the region.
- **2010**: opening of Atlas Copco Mali Sarl to support french speaking countries in West Africa.
- **2012**: opening Atlas Copco Burkina Faso Sarl to support new market.
- **2018**: Following the split of Atlas Copco to Epiroc, Atlas Copco. Ghana, Mali & Burkina Faso became respectively Epiroc Equipment Ghana, Epiroc Mali & Epiroc Burkina Faso.
- **2019**: development of the indirect sales with the signature of our first business partner in the region.
- **2022**: Establishing Epiroc Côte d'Ivoire.

Surface & Exploration Drilling Division (SRD)

Superior surface drilling (SED) productivity.

Civil engineering, quarrying and open pit mining contractors all need the services of blasthole drill rigs. Epiroc's Surface & Exploration Drilling Equipment (SED) has been supplying drill rigs into these market sectors for many decades.

The products are known in the market for being on the cutting edge when it comes to productivity, energy efficiency, safety and ergonomics. With its innovative product design and aftermarket support systems, SED equipment has built a prestigious reputation for itself.

The SED range of machines is able to drill holes ranging in size from 45mm to 216mm. In our market-region, SED not only supplies its equipment to contractors involved in mining, quarrying and civil engineering projects, but supplies its rigs directly to mining companies too. As with all other divisions, Research and Development is key to the continued success. In recent years, SED has successfully launched a complete new range of COPROD Drill Rigs and a range of rigs that support technology such as Silenced Drilling for Urban Construction, Radio Remote Control Technology and SmartROC Technology (which is supported by bench remote for single or multiple drill rig operation). Then of course technology that enhances 'standard'

drilling techniques. One area that has received focus is the new PowerROC T50 Top Hammer Rig. This simple and easy to maintain drill rig is set to reach great heights.

A complete new range of SmartROC and COPROD machines has been introduced into the global market with great success. Customers are extremely satisfied with the SmartROC T45, D65 and C50C.

Along with this we have a wide variety of exploration rigs.

SED is now making a mark in the dimensional stone industry with a wide range of machines specific to this market.

Read more about
drilling products



Surface & Exploration Drilling Division (SRD)

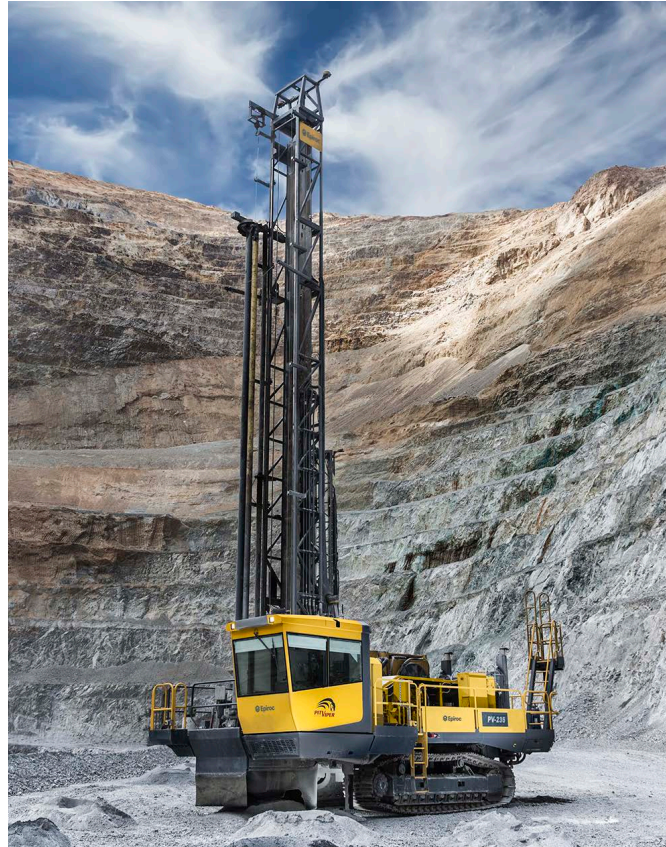
Drilling solutions (ADS) for blastholes, deepholes and waterwells.

Drilling Solutions supply and support three product ranges within the region:

- **Rotary blasthole** drilling machines for surface mining operations, drill and blast contractors
- **Deephole** drilling machines for oil and gas applications
- **Waterwell** drilling machines for the waterwell market

Epiroc supports the Drilling Solutions product range directly through capital sales, parts and technical service as well as through operator and technical training. Our customers include major mining houses major local drill and blast contractors.

Our well developed support structure will provide operators of our deephole products peace of mind when it comes to ensuring maximum productivity. On the waterwell side Epiroc has expanded its current offering with the launch of our Diamond Back range of drilling rigs. Its modular design will offer waterwell contractors flexibility at very competitive prices. Again this range will also be supported through our extensive support network.



Further to our capital equipment offering, we also provide a proven off the shelf automation solution for various levels of automation as per customer need and requirements.

Read more about
blasthole products



Surface & Exploration Drilling Division (SRD)

Explore with confidence.

Reverse Circulation (RC) drilling represents a fast and economical way to retrieve the high quality mineral grade samples needed to efficiently plan your mining and quarrying operations.

Epiroc has deep roots in the world of exploration. As a former part of the Atlas Copco group, recognized worldwide as a leader in rock drilling technology, Epiroc encompass more than 140 years of exploration drilling expertise.

Following the rebranding in 2017, Epiroc now offers the widest range of equipment on the market for exploration purposes, including around 20 different types of Reverse Circulation (RC) drill rigs, surface core drilling rigs and underground core drilling rigs.

The extensive portfolio of Epiroc equipment is continuously upgraded to make exploration safer, more efficient and more productive. Today, remote control, monitoring and automation are changing the nature of operations – helping drillers to work from a safe distance while collecting and analyzing the data.

In 2023, Epiroc completes purchase of key assets of Schramm Australia, a leading manufacturer of products for reverse circulation (RC) drilling in order to strengthen Epiroc's offering and position in the exploration segment



Read more about
exploration &
Orebody solutions



Surface & Exploration Drilling Division (SRD)

Exploration Tools - More performance, less bits.



A comprehensive range of Epiroc core drilling tools designed to increase productivity and profitability. Each of our core drilling bit covers a wider range of applications, fewer bit types than before are needed which translates to a reduction in inventory.

Epiroc can offer the equipment needed for all underground and surface exploration applications. This includes core drilling rigs and a full range of high technical and high quality products; In-The-Hole equipment such as drill rods and casing; wire line and conventional core barrels and diamond tools - all designed to maximize our customers' profitability.

In 2019, Epiroc acquired Fordia, a well-known Canadian manufacturer of exploration drilling tools in order to strengthen Epiroc's offering and position in the exploration segment



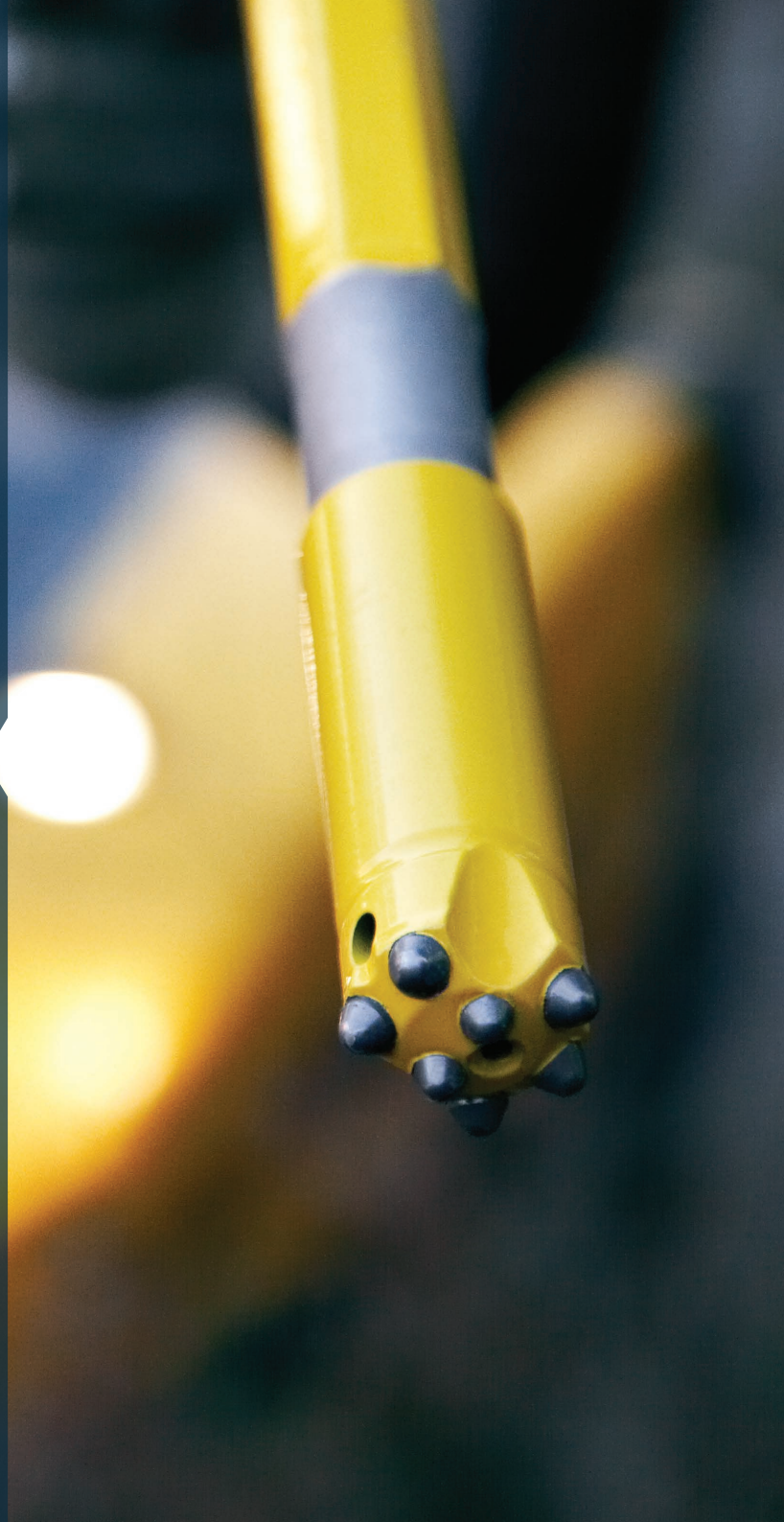
Read more about
exploration tools




FORDIA®
Powered by Epiroc

**Lift your
competitive
advantage with
our drive to make
good things
better.**

From high-performance equipment
and service excellence to build the
mine of the future - we never stop
innovating.



Rock Drilling Tools (RGD)

Drilling tools - The right tools for the job.



We pride ourselves on being able to supply the complete drilling solution that extends to the manufacture and supply of quality rock drilling tools.

The Rock Drilling Tools division provide equipment and consumables for the following drilling methods:

- Top hammer drilling (Surface / Underground)
- Down-the-hole drilling (DTH)
- Raise boring
- Rotary drilling, including PDC (Blasthole)
- Exploration equipment
- Geotechnical equipment
- Coal Tools & Coal Picks

We are able to supply a complete consumable offering from the drill bit, right up to the entire drill string, including various types of drill steels and shank adaptors.

Read more about
drilling tools





**Our
features
make the
difference.**

Attachments Division (ATD)

Hydraulic Attachment (HAT)- Light, compact and more powerful.



We created the first-ever hydraulic breaker. The patent awarded in 1963 set the stage for a new way of using hydraulic attachment tools on excavators – changing an entire industry. Since then, customers around the world have been benefiting from our hydraulic tools.

Hydraulic Attachment Tools offer a range of excavator attachments for mining, demolition, recycling and earthworks applications. Our product offering consists of:

- Hydraulic breakers
- Demolition pulverisers
- Bulk pulverisers
- Multi grapples
- Steel cutters
- Concrete busters
- Hydro magnets
- Hydraulic compactors
- Bucket crushers
- Steel accessories
- Installation parts & adaptor brackets
- Original spare parts
- Service
- Refurbishment

Read more about
HAT products



Our Hydraulic Attachment Tools are built with technology that makes them light, compact and more powerful than ever. The innovative features contribute to improved productivity and lower running costs, plus we can give your breaker a new life with our rebuilt program. Our offering of quality parts and accessories ensure peace of mind and reliability.

Attachments Division (ATD)

Ground Support tools.



We are proud to be a part of making underground a safer place to work for thousands of people every day.

Epiroc designs and manufactures a diverse range of quality ground support products for various ground support applications.

Our product categories include :

- Energy absorbing rockbolts,
- Quasi-static rockbolts,
- Anti-Spin Cable,
- Pumpable resin,
- Pre-stressing units,
- Safety net,
- Monitoring and warning devices



Read more about
ground support



Attachments Division (ATD)

Mining by numbers.

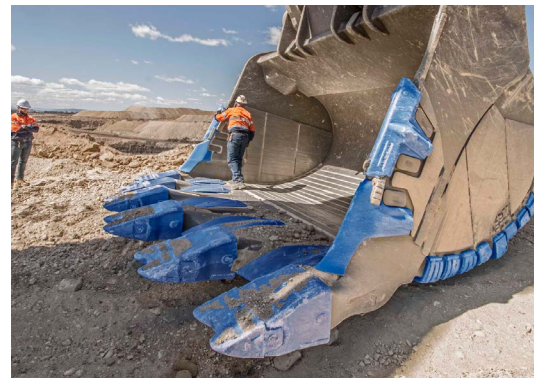


We have a comprehensive range of mining equipment and technology includes lips, Ground Engaging Tools (GET), dragline buckets and rigging, conveyor systems, fixed plant wear products, plate block and wear, and digital solutions.

Our world-class range of mining equipment for both surface and underground is engineered to unlock productivity, enhance safety, and reduce maintenance requirements. Our product categories include :

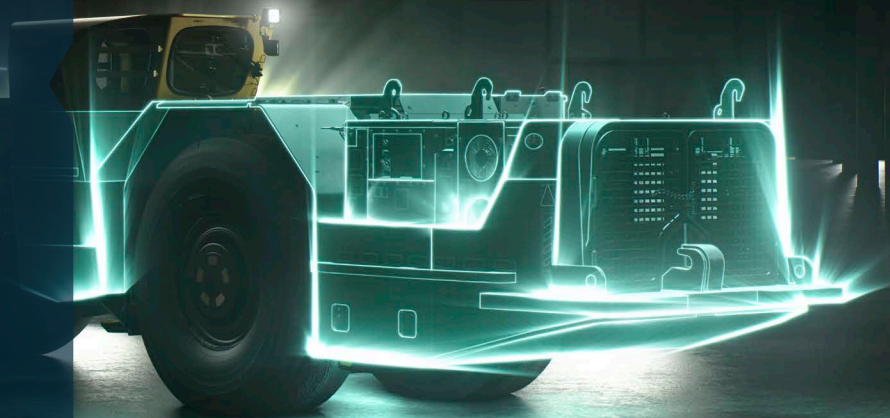
- Cast Lips for Hydraulic Excavators, wheel loaders and Rope Shovels
- Dragline buckets
- Ground Engaging Tools (GET)
- Machined Lip for Wheel Loaders and Rope Shovels
- Continuous Edge GET System for LHDs and Wheel Loaders
- Dragline Rigging and Chain Solutions
- Universal Lifting Solution
- Universal GET Handling
- Mining Conveyor Systems
- Wear Parts

Read more about
our solutions



How electrification enables productivity & sustainability transformation.

- Protecting people from dangerous fumes, noise and heat.
- Eliminating or reducing CO₂e emissions.
- Reducing energy consumption (ventilation is a large part of operational expenses).
- Avoiding costly capex investments in ventilation.
- Adhering to new legislation, rules and standards.



Underground Rock Excavation Division (UMR)

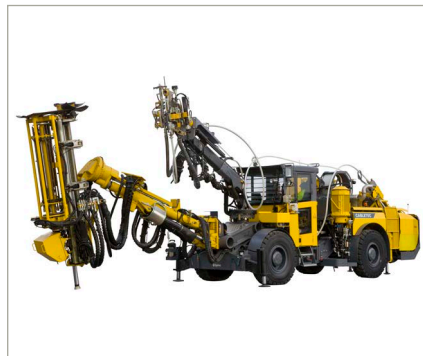
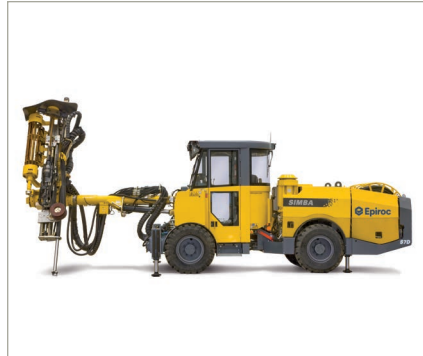
A leader in underground technology.

The Underground Rock Excavation (UMR) division comprises six distinct product groups in the form of Tunnelling and Mining Equipment (TME), Load Haul Dump Equipment (LHD), Epiroc Haggloaders, Pedestal Boom Systems (PBS), Meyco Shotcrete Equipment and the SwedVent Range of Ventilation Equipment.

Our TME range comprises of roof bolters, multipurpose machines that drill holes and install cables, as well as underground long hole drill rigs.(SIMBA). The LHD products comprise an extensive range of scooptrams and mine trucks that have been purposefully designed and built for a variety of underground needs and requirements. We have expanded our proven battery offering and zero-emission underground fleet with the second generation in loaders, mine trucks and rigs for face drilling, production drilling and rock reinforcement. The new battery power-packs comply with CE standards and can be covered by a new battery service plan.



Read more about
UMR products



We are Epiroc, the leader in mining digitalization.

Automation and digitalization are the future of the mining industry. Epiroc offer smart connected products called “**6th Sense**”. With **6th Sense** comes a great focus on system connectivity, using interoperability to unlock the full potential of automation for production gains at lower operating costs. **6th Sense** is available for surface and underground mining equipment.

6th Sense - Smart. Safe. Seamless.



Digital Solution Division (DSD)

Leading Automation & Digitalisation in mining, quarrying & construction.

6th Sense is our answer to the mining & construction industries need for digitalization as an enabler for safety and productivity gains. Our range of solutions supports your digitalization journey regardless of your current state.

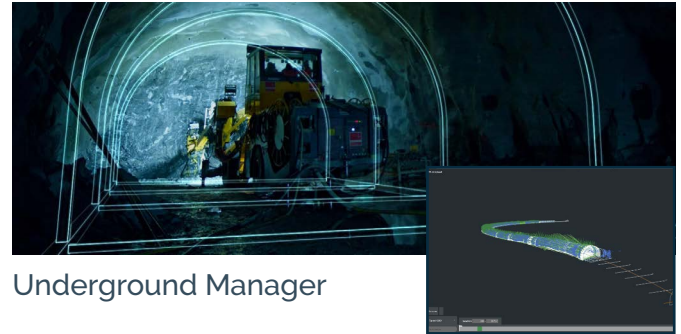
We serve both mining and construction with a wide range of solutions that improves both safety and productivity :

- System integration: end-to-end process optimization
- process automation: fleet and asset optimization functionalities
- machine automation: from operator assist to fully autonomous
- digital tools: digitized workflows and instant access to information

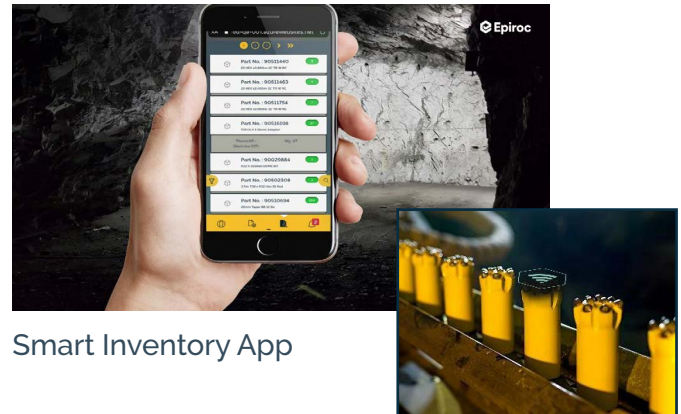
Some examples of 6th Sense Solutions provided

- Underground Manager : for mining & tunneling projects
- My Epiroc: to track your fleet, to get insights of your service needs and to track your orders etc.
- Minetruck & Scooptram Automation: for a safer underground operation
- Smart Inventory App: to reduce uncertainty demand and inventory requirement
- Office TeleREMOTE: to control multiple SmartROC rigs remotely

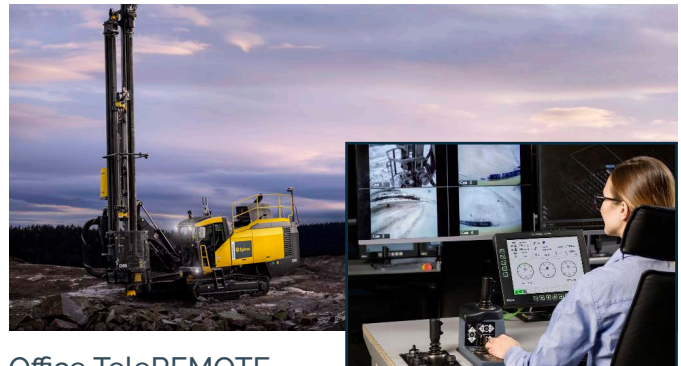
Read more about
automation solution



Underground Manager

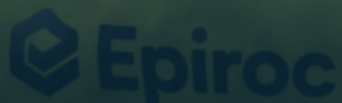


Smart Inventory App



Office TeleREMOTE

With Epiroc as
a dedicated
partner, you gain
a passionate
team that
supports you in
a sustainable,
efficient and
safe way.



Parts and Service Division (PSD)

Anywhere. Anytime.

The Parts and Service division is a division which provides a complete range of services with the aim of maximizing customers' productivity. Our products are built to last. Within the service division, we support your equipment with sustainable solutions that deliver better safety, higher productivity and peace of mind. Our service offering is loaded with reliability and the highest availability. We aim to contribute to your profitability and add value to your operation.



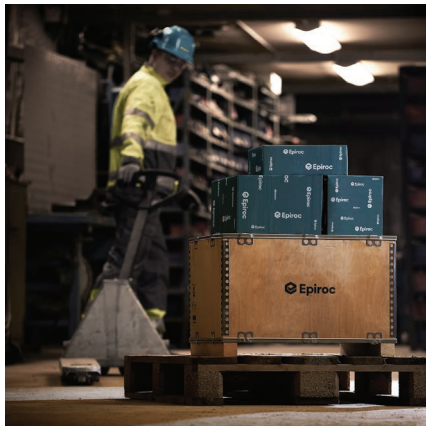
We have various service offerings such as replacement parts and kits, service products, service tools, custom engineered solutions, remote monitoring, reman solutions, fluid management solutions and training. At our Office, our workshop is under refurbishment to have a purpose built, world class component rebuilding facility which caters for components such as rock drill, rotation units, axles as well as air-ends.

Our service offering has been extended to include service agreements and audits (RigScan, CARE

agreement, On Site agreement) and telematics solution. In Telematics, we have introduced CERTIQ, a web-based solution which remotely monitors machine activity, providing insight into operator activities and productivity, as well as information on the condition of the machine.



Read more about
PSD Solution



Exploiting the true potential.

The purpose of our service division is threefold. Firstly, it sees to the marketing of Epiroc spare parts and consumables. Secondly, through the aftermarket service, Epiroc machines deliver better service and satisfaction to their owners. And thirdly, the aftermarket business, by insisting on genuine replacement parts, ultimately protects the integrity of the Epiroc brand. With genuine parts and service from the original equipment manufacturer (OEM), machines and equipment perform to their full potential. The use of pirate parts carries with it various risks. Apart from aspects such as downtime and poor performance, mines compromise their safety by sourcing non-OEM parts. As has been seen in many other industries, the fitting of pirate parts can result in unexpected and premature failures. When the failures

happen in machine systems such as brakes or steering, the safety risks are obvious.

Given the severe financial loss caused by unscheduled downtime, many of the larger mines are moving away from using pirate parts. With today's metal prices, the emphasis is on mining as efficiently as possible. To do this, mines need the maximum availability from their equipment, something which the use of genuine parts guarantees.

Securing your capital investment.

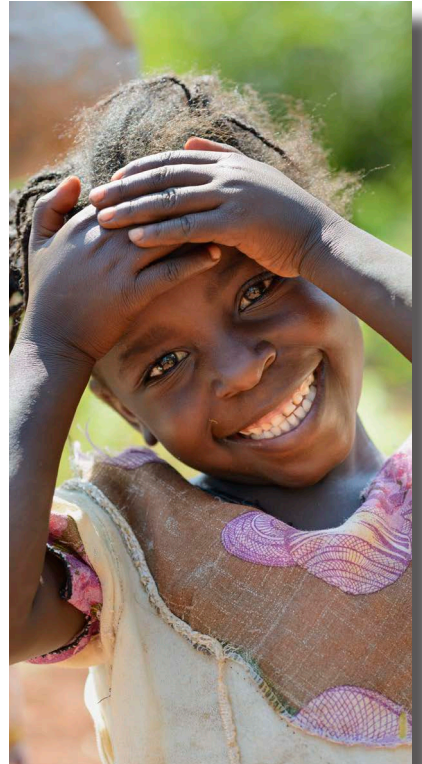
Epiroc recognises that the purchase of capital equipment is only the start of a long-term business relationship. Customers buy Epiroc equipment with the expectation of enhanced and sustained productivity. To sustain this productive relationship, the company places great emphasis on excellent aftermarket support and different type of training.



Read our customers
success stories



Committed to build a sustainable community in West Africa.



Water for All is Epiroc's main community engagement project, driven on the local level by our employees on a voluntary basis. A guiding principle is that access to clean water is a human right and the foundation for improved living conditions.

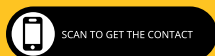
We take pride in empowering our local communities in different ways. Our Corporate Social Responsibility focus are aligned to the **United Nation Sustainable Development Goals** :

- **Welfare** : promoting Good health and wellbeing,
- **Education**: promoting quality education.
- **Diversity**: promoting gender equality.
- **Water** : providing clean water and sanitation.





United in performance.
Inspired by innovation.



SCAN TO GET THE CONTACT



Epiroc West Africa

Epiroc Equipment Ghana Ltd

Volta Place building - First floor
35 Patrice Lumumba Street
Accra - Ghana
+233 (0) 596 921 994

Epiroc Mali Sarl

Route de Sotuba
Rue 78 - Porte 239
Bamako, Mali
+223 44 98 06 00

Epiroc Burkina Faso Sarl

Quartier Dassasgho
Rue 27-67 - Porte 150
Ouagadougou, Burkina Faso
+226 25 42 99 00

Epiroc Côte d'Ivoire Sarl

Tour Ivoire - 7ème étage
Boulevard Valéry Giscard d'Estaing
Abidjan - Côte d'Ivoire
+225 27 21 71 06 20

Email: contact.westafrica@epiroc.com