

CertiQ on Simba

All available information for the specified machine types



Simba model supported

E6 C-W/WL, E7C/E7C-ITH, M4C/M4C-ITH, M6C/M6C-ITH, ME7C

Operation

Drilling

Total drill meters

Drill meters per drill hour

Utilization

Utilization hours (machine off/idle/working)

Utilization %

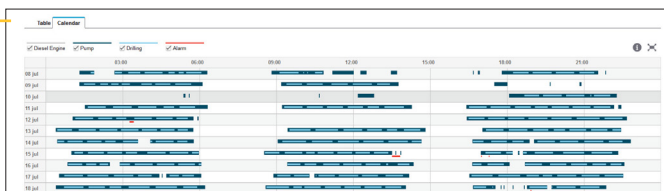
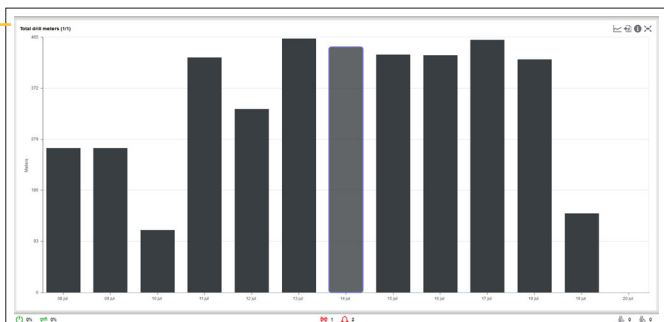
Engine hours*

Drill hours*

Pump hours

Location

Site position*



Maintenance

Service

No. of machines in overdue status

No. of reported services

Predicted date for next service

Hours to next service

Diagnostic

Active alarms

No. of alarms*

Alarm type trending (engine/hydraulics/others)

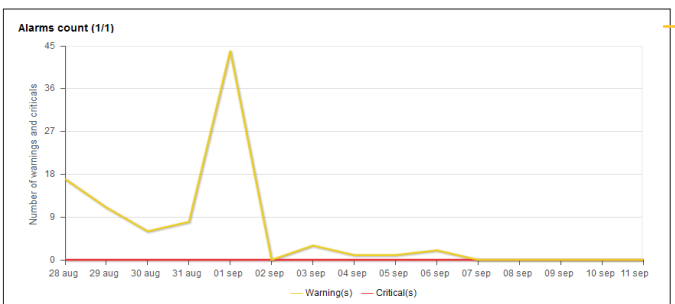
Alarm frequency (Count and time for each type)

Acknowledge alarm

Connectivity

Last communication

Service interval	Description	Unit	Predicted date for service	Next service hours	Status	Total engine hours	Total pump hours
200h	200h TME Impact ser...	Drill unit 1	1/09/2016	36	Upcoming	1,095	1,365
50h	50h TME Impact ser...	Drill unit 1	1/09/2016	25	Upcoming	1,095	1,365



*Available in selected markets on all factory delivered machines

Reports

Excel reports

Report subscription

Notification

Mail notification

SMS notification

Administration (admins only)

User settings

Machine settings

Organization settings

Available alarms

Engine oil pressure low warning

Engine coolant temp high warning

Hydraulic oil temp high warning

Hydraulic oil level low warning

Hydraulic oil filter clogged warning

Compressor high stage temp high warning

Latest machine data:		09-03-2015 12:00:00 AM					
Machine model	Machines	Date	Accumulated drill met	Engine hours per day	Pump hours per day	Drill hours per day	
Simba E7 C	Simba 83	2015-07-08	20 522,1	1,97	0,00	5,25	
Simba E7 C	Simba 83	2015-07-09	20 784,6	1,97	0,00	5,25	
Simba E7 C	Simba 83	2015-07-10	20 898,5	2,66	5,00	5,25	
Simba E7 C	Simba 83	2015-07-11	21 326,6	2,85	16,00	5,25	
Simba E7 C	Simba 83	2015-07-12	21 660,4	2,00	10,83	5,25	
Simba E7 C	Simba 83	2015-07-13	22 122,8	2,30	16,17	5,25	
Simba E7 C	Simba 83	2015-07-14	22 570,0	1,65	17,00	8,82	
Simba E7 C	Simba 83	2015-07-15	23 003,0	1,60	14,72	8,54	

(Some variations of supported alarms may exist due to model/year and engine alternative)

Epiroc Rock Drills AB

SE-701 91 Örebro, Sweden

Phone no: +46 (0)10 7550 000

Org no: 556077-9018

epiroc.com

