



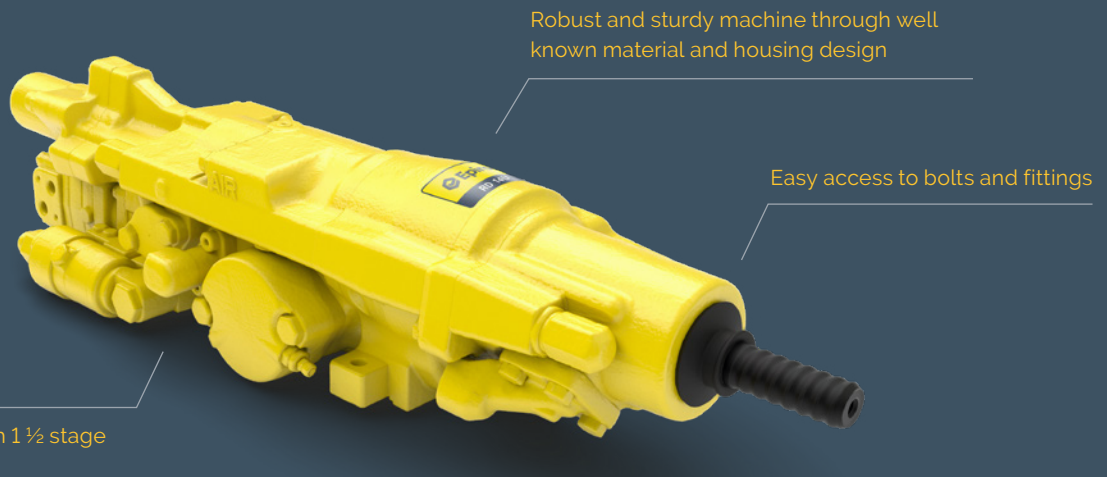
RD 14U

Straight forward hydraulic rock drill for underground drifting applications. Hole range 35 - 64 mm (1 3/8 " - 2 1/2").



Straight forward reliability

Rock drill for underground drifting applications, developed for straight forward and reliable operation.



Robust and sturdy machine through well known material and housing design

Easy access to bolts and fittings

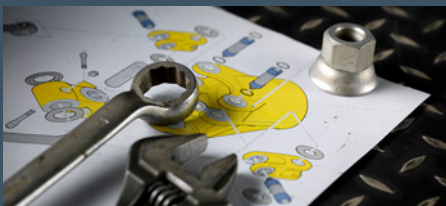
Internal supplied with 1 ½ stage damper

+ Main benefits

Durability: Robust with a straight forward design; delivering the consistent performance associated with Epiroc's rock drills

Easy to operate: Less complex with fewer parts and settings

Intuitive service: Intuitive to maintain and overhaul, requiring no custom designed tools



Installation instructions and retrofit support are available upon request.



Repair kit consisting of parts to be replaced during overhaul is available with quick delivery.



All spare parts and wear parts are available, with critical parts always in stock.

Technical specifications

Dimensions and weight

Weight	176 kg (388 lb)
Length	1008 mm (3 ft 6.6 inch)
Height	235 mm (9.25 inch)
Width	272 mm (10.7 inch)

Impact ratings

Impact power, max	14 kW (18.8 hp)
Input power to rock drill, max	25 kW (33.5 hp)
Impact frequency	50 Hz
Drill pressure	200 bar (2 900 psi)
Drill oil flow	80 l/min (2.8 cfm)

Drilling parameters

Rod size	T38, R38
Hole range	33 - 64 mm (1 1/4 - 2 1/2 inch)
Optimum hole dimension	48 mm (1 8/9 inch)

Hose sizes

Percussion hose	3/4 inch
Drain hose	3/8 inch
Rotation hoses	1/2 inch
Flushing hose	1 inch
Lubrication hose	3/8 inch
Percussion return hose	3/4 inch

Flushing flow and pressure

Flushing water pressure, max	25 bar (362.6 psi)
Lubricating air consumption	7 l/s at 3 bar (14.8 cfm at 43.5 psi)
Flushing water consumption*	40 - 120 l/min (1.4 - 4.3 cfm)

* Flushing water consumption depends strongly upon hole diameter, bit type, drill rod size and rock hardness. The figures above are typical values for spherical button bits in granite 200 Mpa (36,250 psi)

Rotation ratings

Motor size	(07) 160 cc
Rotation torque, max*	1050 Nm (958 lbf-ft)
Rotation speed*	0 - 215 rpm
Rotation pressure, max	210 bar (3,045 psi)
Oil consumption, max	75 l/min (2.6 cfm)

*at drill string

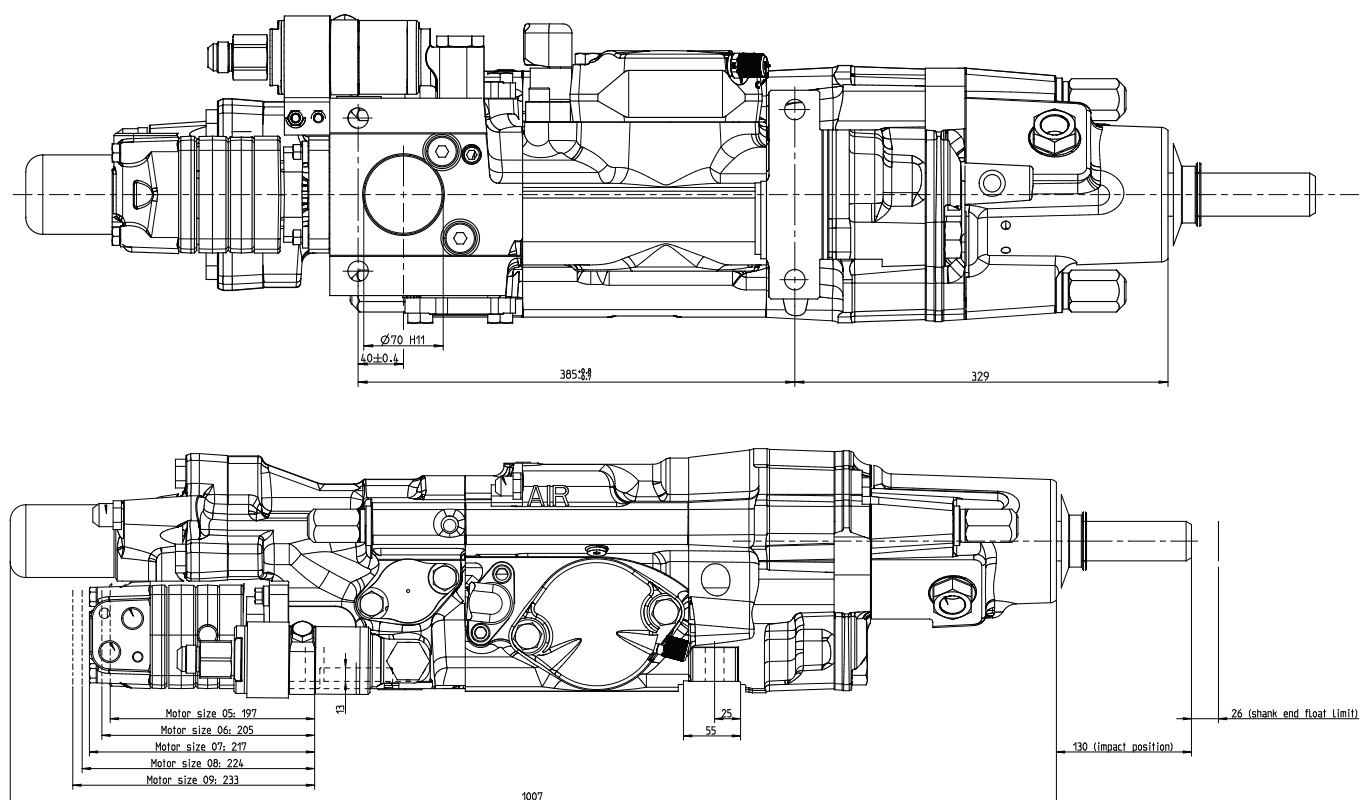
Accumulator charge pressure

Intake	90 bar (1305 psi)
Return	Atm.

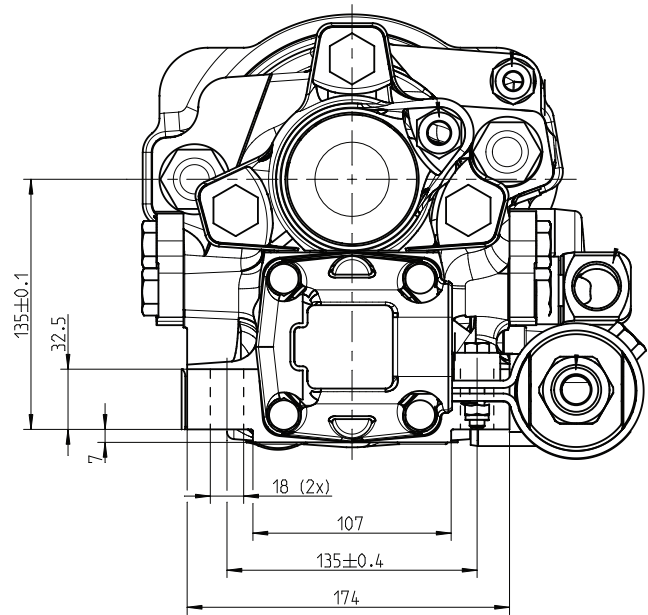
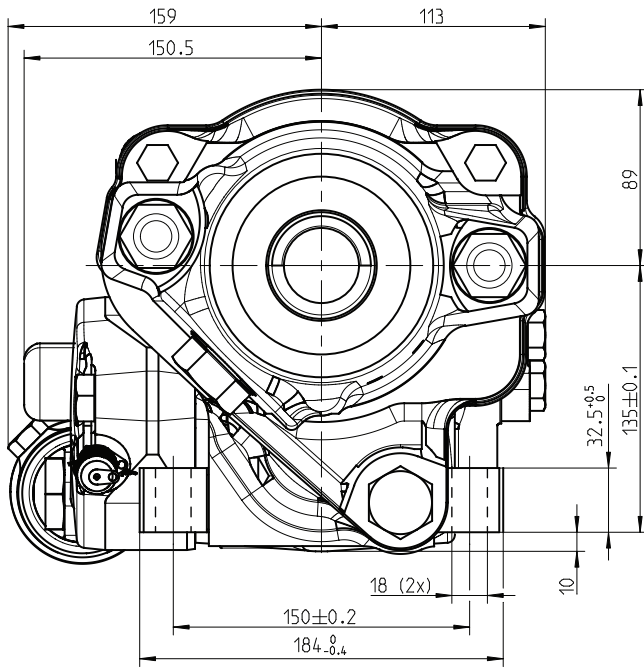
Shank adapter

T38	90516120 / 435-09101.10
R38	90516098 / 404-09101.10
T38E (extension drilling)	90516121 / 435-09103.10
R38E (extension drilling)	90516099 / 404-09103.10

Outline dimensions



Outline dimensions



United in performance. Inspired by innovation.

Performance unites us, innovation inspires us, and commitment drives us to keep moving forward. Count on Epiroc to deliver the solutions you need to succeed today and the technology to lead tomorrow.
epiroc.com

