



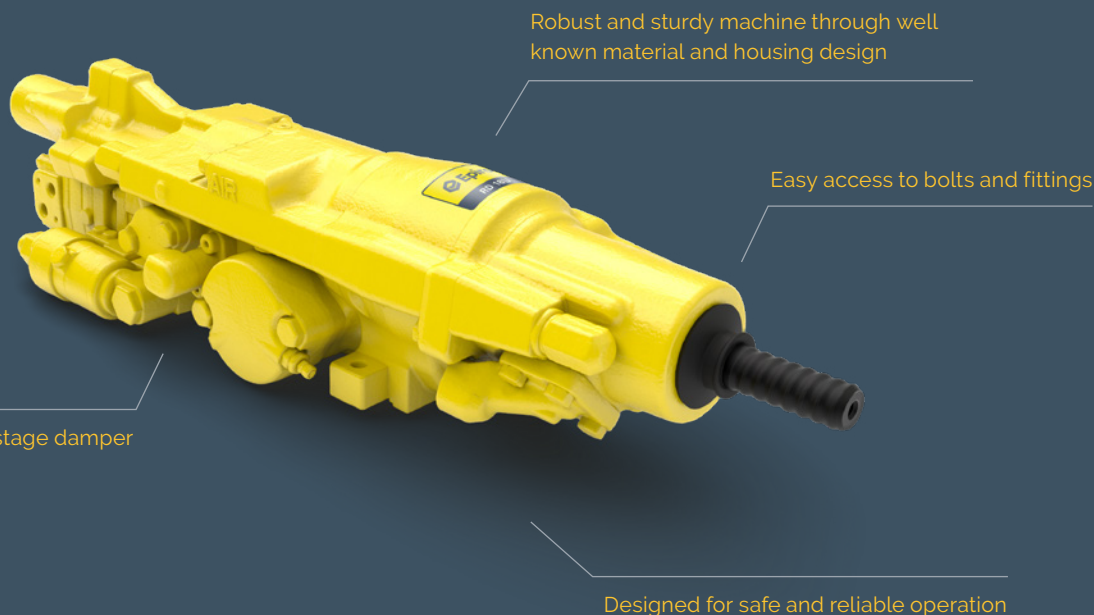
## RD 18U

Straight forward hydraulic rock drill for underground drifting applications. Hole range 35 - 64 mm (1 3/8 " - 2 1/2").

 **Epiroc**

# Straight forward reliability

Rock drill for underground drifting applications developed for straight forward and reliable operation.

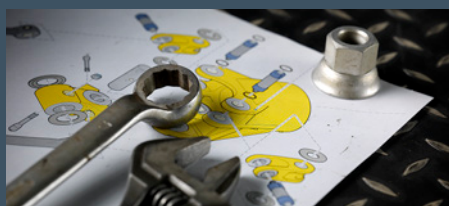


## + Main benefits

**Durability:** Robust with a straight forward design; delivering the consistent performance associated with Epiroc's rock drills

**Easy to operate:** Less complex with fewer parts and settings

**Intuitive service:** Intuitive to maintain and overhaul, requiring no custom designed tools



Installation instructions and retrofit support are available upon request.



Repair kit consisting of parts to be replaced during overhaul is available with quick delivery.



All spare parts and wear parts are available, with critical parts always in stock.

# Technical specifications

## Dimensions and weight

Weight	176 kg (388 lb)
Length	1008 mm (3 ft 6.6 inch)
Height	235 mm (9.25 inch)
Width	272 mm (10.7 inch)

## Impact ratings

Impact power, max	18 kW (24 hp)
Input power to rock drill, max	34 kW (45.6 hp)
Impact frequency	57 Hz
Drill pressure	215 bar (3118 psi)
Drill oil flow	93 L/min (3.28 cfm)

## Drilling parameters

Rod size	T38, R38
Hole range	33 - 64 mm (1 1/4 - 2 1/2 inch)
Optimum hole dimension	48 mm (1 8/9 inch)

## Hose sizes

Percussion hose	3/4 inch
Drain hose	3/8 inch
Rotation hoses	1/2 inch
Flushing hose	1 inch
Lubrication hose	3/8 inch
Percussion return hose	3/4 inch

## Flushing flow and pressure

Flushing water pressure, max	25 bar (362.6 psi)
Lubricating air consumption	7 L/s at 3 bar (14.8 cfm at 43.5 psi)
Flushing water consumption*	40 - 120 L/min (1.4 - 4.3 cfm)

\* Flushing water consumption depends strongly upon hole diameter, bit type, drill rod size and rock hardness. The figures above are typical values for spherical button bits in granite 200 Mpa (36,250 psi)

## Rotation ratings

Motor size	(07) 160 cc
Rotation torque, max*	1050 Nm (958 lbf-ft)
Rotation speed*	0 - 220 rpm
Rotation pressure, max	210 bar (3,045 psi)
Oil consumption, max	75 L/min (2.6 cfm)

\*at drill string

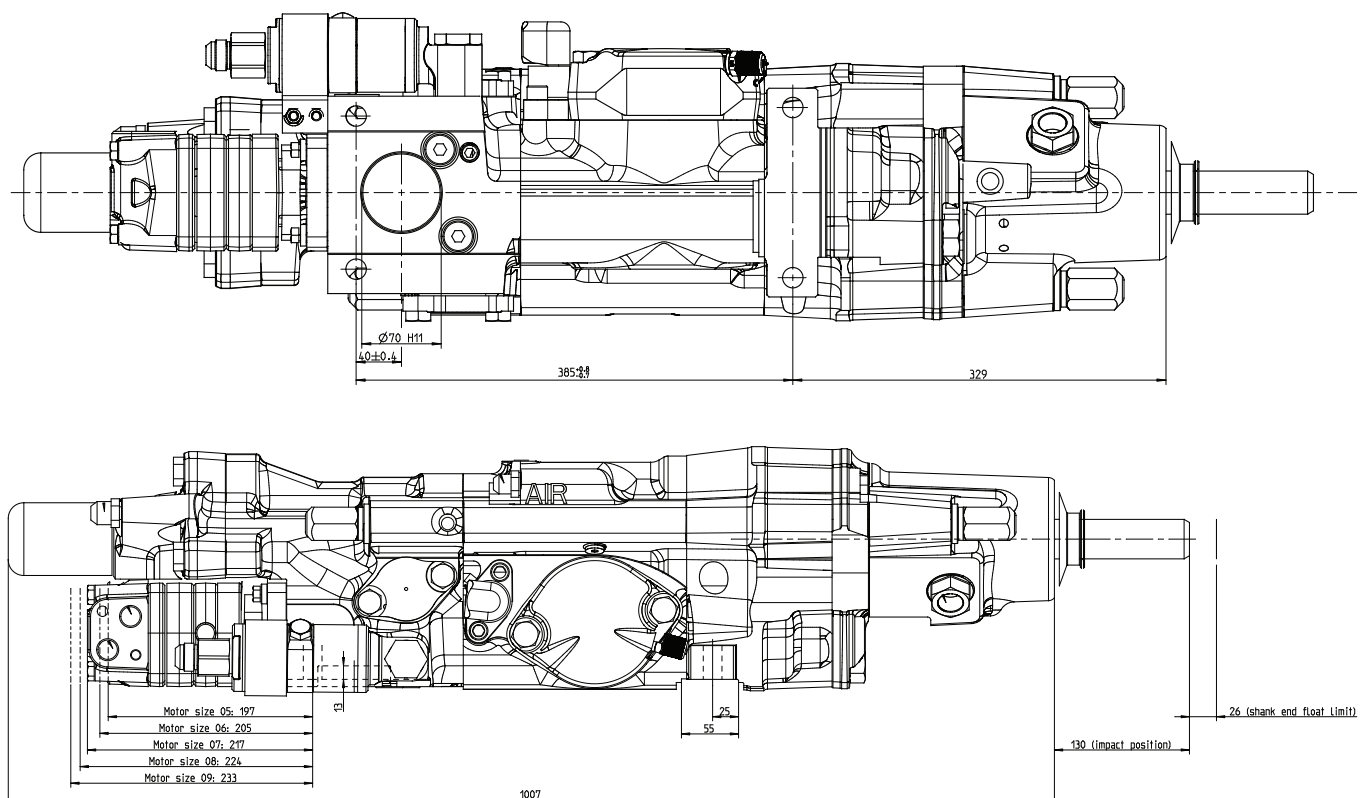
## Accumulator charge pressure

Intake	90 bar (1305 psi)
Return	Atm.

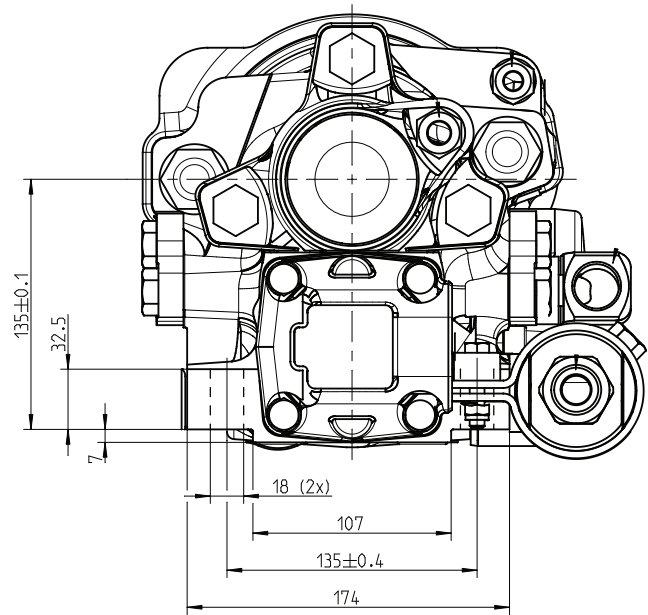
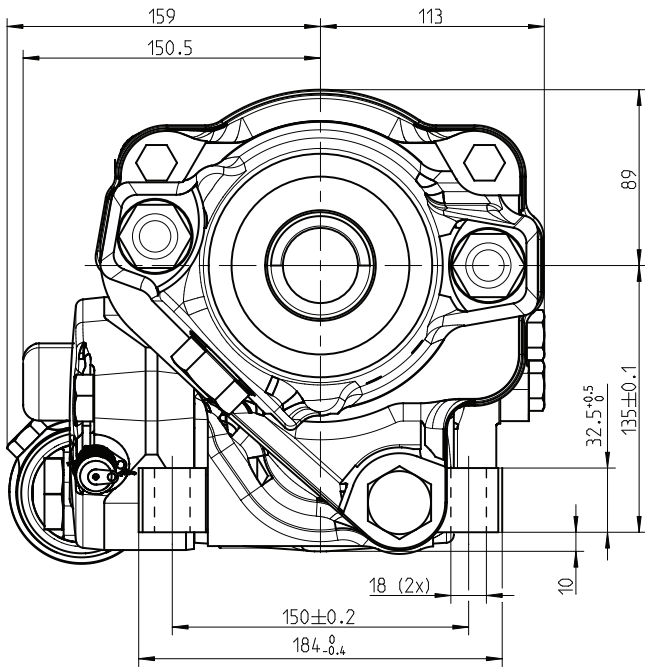
## Shank adapter

T38	90516120 / 435-09101.10
R38	90516098 / 404-09101.10
T38E (extension drilling)	90516121 / 435-09103.10
R38E (extension drilling)	90516099 / 404-09103.10

## Outline dimensions



## Outline dimensions



## United in performance. Inspired by innovation.

Performance unites us, innovation inspires us, and commitment drives us to keep moving forward. Count on Epiroc to deliver the solutions you need to succeed today and the technology to lead tomorrow.

[epiroc.com](http://epiroc.com)

