

Product update

DM30 XC
June, 2024



Product update

June, 2024

DM30 XC

Standard

- ⊕ Additional lube kit
- ⊕ Jack screw upgrade
- ⊕ Tower-locking cylinder reinforcement
- ⊕ Double pump shaft upgrade
- ⊕ Rotary head upgrade

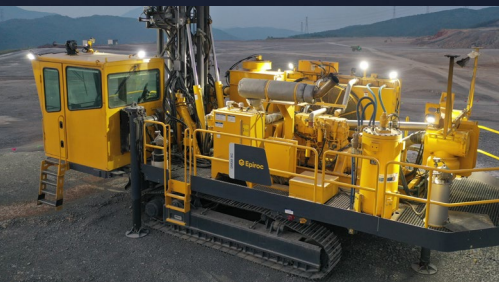
Optional

- ⊕ Four battery
- ⊕ Manual pump
- ⊕ C13B T4F & China IV engine

Optimized for performance and reliability

The DM30 XC is a versatile and powerful blasthole drill rig that can handle drill pipe sizes ranging from 101.6 mm (4 in) up to 159 mm (6-1/4 in) and weight-on-bit of 20,000 kgs (44,000 lbs).

This product update offers significant enhancements that ensure extended working life and prioritize heightened safety measures, streamlined efficiency, and significantly reduced carbon emissions.



The DM30 XC is designed for maximum productivity and efficiency due to increased rotary torque, increased pull-down, and a larger hole range

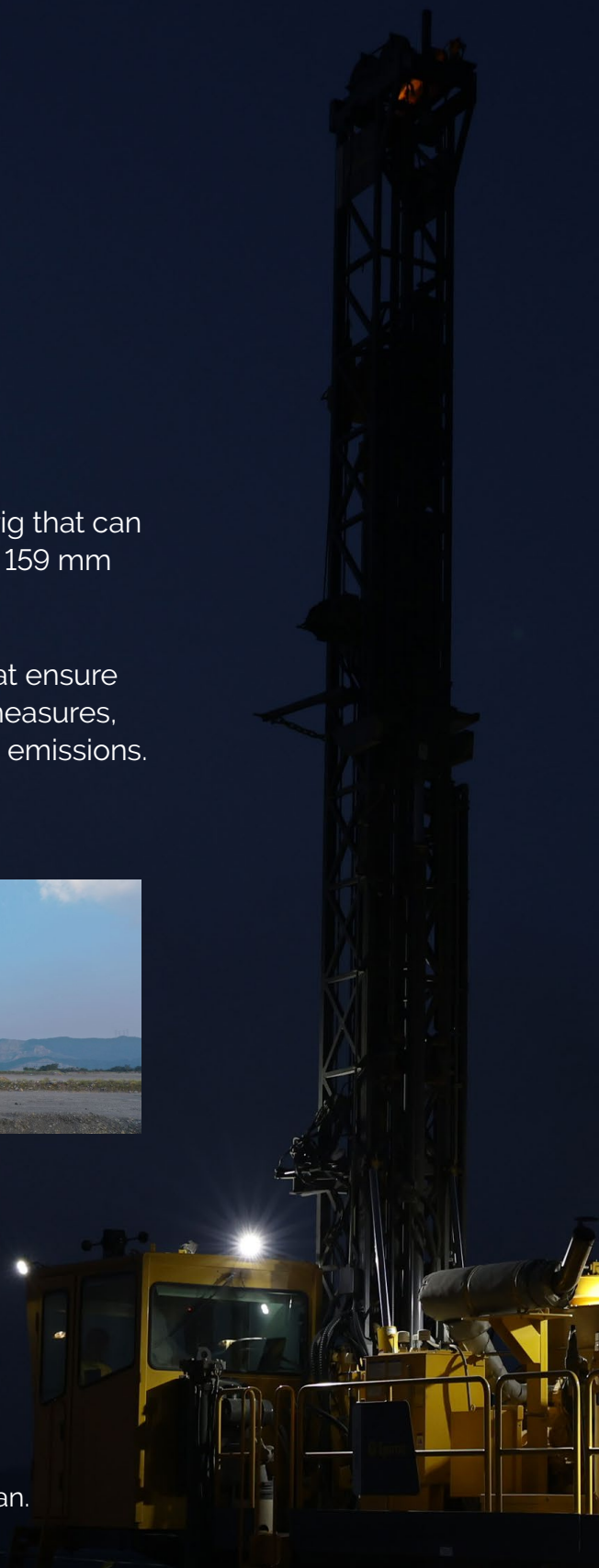
capability. Customers can choose a low- or high-pressure compressor to create the right configuration for their drilling operation.

Update benefit(s)

Extended Work Life Enhance durability with advanced lubrication and reinforced components, prolonging rig lifespan.

Safety and Total Cost of Ownership Improve safety and cost-effectiveness with reinforced features, minimizing risks and expenses.

Efficiency, Maintenance Ease, and Lower Carbon Footprint Streamline operations and reduce environmental impact with user-friendly maintenance options and greener engine choices.



Standard Upgrades

Additional lube kit

The additional lube kit extends the pump drive system's working life by reducing wear. It lubricates gears, the double pump, and main pump shaft while enhancing bearing and spline sleeve lubrication. This ensures prolonged functionality and efficiency, essential for pump maintenance.

Jack screw upgrade

The jack screw upgrade integrates an anti-loose device, minimizing feed rope loosening and failure risks while extending its working life. It also reduces the frequency of feed rope tensioning, streamlining maintenance tasks.

Tower-locking cylinder reinforcement

Strengthening the tower locking cylinder structure enhances resilience in harsh conditions, reduces failure risks, and ensures reliable performance crucial for operational efficiency in demanding environments.

Double pump shaft

Enhances safety and mechanical strength, prolonging the working life of the double pump while reducing maintenance expenses and ensuring cost-effective and efficient operation.

Rotary head upgrade

The Rotary head upgrade improves box structure strength for harsh conditions. Upgraded capscrew specifications prevent loose screw failures, reducing the need for frequent checks and tensioning, thus cutting maintenance costs.

Optional Upgrades

Four battery

The Four Battery system boosts power capacitance, ensuring easier engine starts, particularly in Arctic conditions. Additionally, it extends the working life of the batteries, enhancing overall performance and reliability.

Manual pump shaft

Enables manual hydraulic oil addition anywhere, especially in the absence of refueling machines. Its user-friendly design ensures ease of operation and high efficiency when adding hydraulic oil, enhancing field operations.

C13B T4F & China IV Engine

The C13B T4F and the China IV engines offer customers a variety of choices to meet diverse emission regulations and power needs. These engines prioritize energy conservation and reduce CO2 emissions, aligning with environmental goals.



- + **Faster hole to hole**
- + **Improved fuel efficiency**
- + **Scalable automation**

United in performance. Inspired by innovation.

Performance unites us, innovation inspires us, and commitment drives us to keep moving forward. Count on Epiroc to deliver the solutions you need to succeed today and the technology to lead tomorrow.
epiroc.com