

PowerROC D60

Surface drill rig for mining and quarrying

Hole diameter: 110–178 mm (4.3–7")





Excellent combination of value and productivity

PowerROC D60 is a drill rig with a high level of productivity and performance when it comes to drilling big holes ranging from 110 mm to 178 mm.

PowerROC D60 is available with Tier 3, Tier 4 Final/Stage V and China IV engine versions. The PowerROC control system makes the rig easy to operate and easy to service, resulting in more reliable performance. The 5+1 Rod Handling System (RHS) makes it possible to drill holes down to a depth of 30 m at maximum.

The aluminum feed beam combined with dual drill steel support ensures the straightness of the hole. The powerful DHR 6H rotary unit ensures that the rig can operate reliably in all types of rock conditions. The highly-efficient dust collection system contributes to a cleaner environment.

⊕ Main benefits

High performance thanks to well-proven Epiroc technology and extensive experience.

High reliability due to high-quality components.

Easy operation and maintenance thanks to its PowerROC control system.

A partner you can trust

The PowerROC D60 hydraulic down-the-hole drill rig is safe, environmentally friendly and powerful, helping you increase production capability. With its ease of maintenance, the rig ensures high availability, performance and productivity day in and day out.



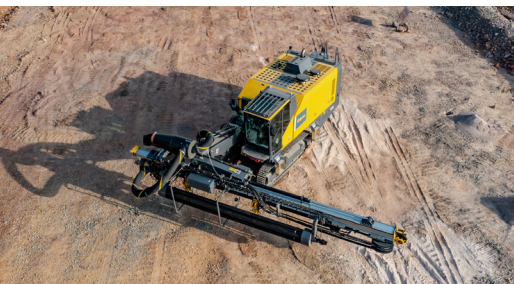
+ Safety always in focus

The air-conditioned FOPS and ROPS certified cabin ensures operator safety at all times. It provides a comfortable experience and a broad view when drilling or changing rods. If the system detects the operator leaving the seat while drilling, it will stop drilling to prevent unattended drilling.



+ High performance ensuring high productivity

PowerROC D60 is built with the proven Epiroc rotary unit, providing great power to daily production. Equipped with Atlas Copco two-stage screw compressor, PowerROC D60 delivers up to 428 l/s of air at a maximum pressure of 25 bar, ensuring a high penetration rate. The aluminum feed beam ensures drilling is steady and smooth. The robust chain feed ensures lower running costs and a longer service life.



+ Easy and convenient maintenance

PowerROC D60 provides easy access to vital service points. It is convenient to check oil levels and change all air and oil filters. In addition, the hydraulic valve blocks have been positioned to allow for easy adjustment and inspection. The feed beam can be positioned horizontally, which enables toe hole drilling and makes for easy trouble-shooting and maintenance.



A comprehensive service offering

Even the best equipment needs to be serviced regularly to make sure it sustains peak performance. An Epiroc service solution offers peace of mind, maximizing availability and performance throughout the lifetime of your equipment. We focus on safety, productivity and reliability.

By combining genuine parts and an Epiroc service from our certified technicians, we safeguard your productivity – wherever you are.

Technical specifications

Main components

- Track frames with triple grouser pads and cleaning holes, hydraulic track oscillation and two speed traction
- CAT turbo-charged diesel engine: Tier 3, Tier 4 Final and China IV version
- Atlas Copco two-stage screw type compressor
- Carousel type rod handling system
- ROPS and FOPS-certified cabin with a 12.1 inch display and air conditioner
- Standard boom
- Break-out table
- Hydraulic oil heater

Engine

Turbo-charged, diesel engine	Metric	US
CAT C13, Tier 3 Power rating at 1 800 rpm	385 kW	516 hp
CAT C13B, Tier 4 Final/Stage V/China IV Power rating at 1 800 rpm	370 kW	496 hp

Compressor

Atlas Copco, two-stage screw type compressor	Metric	US
Maximum working pressure	25 bar	363 psi
FAD, at normal working pressure	428 l/s	906 cfm

Hydraulic system

Hydraulic oil cooler	Metric	US
Maximum ambient temperature	52°C	125.6°F

Volumes

Hydraulic oil tank	380 l	100 US gal
Hydraulic system, total	530 l	139 US gal
Compressor oil	80 l	21.1 US gal
Diesel engine oil	45 l	11.9 US gal
Diesel engine, cooling water	100 l	26 US gal
Diesel engine, fuel tank	760 l	200 US gal
Traction gear	3 l	0.8 US gal
Lubrication tank (HECL)	20 l	5.3 US gal
Urea tank (Tier 4 Final/China IV)	70 l	18.6 US gal

Dust collector DCT 320

	Metric	US
Filter area	32 m²	344 sq.ft
Number of filter elements	32 pcs	32 pcs
Cleaning air pressure, max	8.0 bar	116 psi
Cleaning air consumption	2–4 l/pulse	0.06–0.12 cu.ft/pulse

Rotary head

Rotary head	Connection thread	Hole range	Max rpm	Max torque	Suitable for DTH hammer
DHR 6H 56 - 1	API 2 3/8" REG, box	110–152 mm	107 rpm	3 900 Nm (2 867 lbf-ft)	4', 5'
DHR 6H 68 - 3	API 3 1/2" REG, box	152–178 mm	68 rpm	5 100 Nm (3 761 lbf-ft)	6"

- Power ECO
- Dry type dust collector with pre-seperator
- Aluminum feed beam which can be positioned horizontally for toe-hole drilling
- Chain feed system powered by hydraulic motor
- Feed extension
- DTH hammer lubricator device (pneumatic)
- Thread lubrication, spray system
- Back-up alarm
- Feed angle indicator

Feed

Chain feed with dual drill rod support	Metric	US
Feed extension	1 900 mm	74.8"
Feed rate, max	0.85 m/s	170 ft/min
Feed force, max	35 kN	7 868 lbf
Tractive pull, max	40 kN	8 992 lbf
Total length	9 400 mm	370"
Travel length	5 400 mm	212.6"

Electrical system

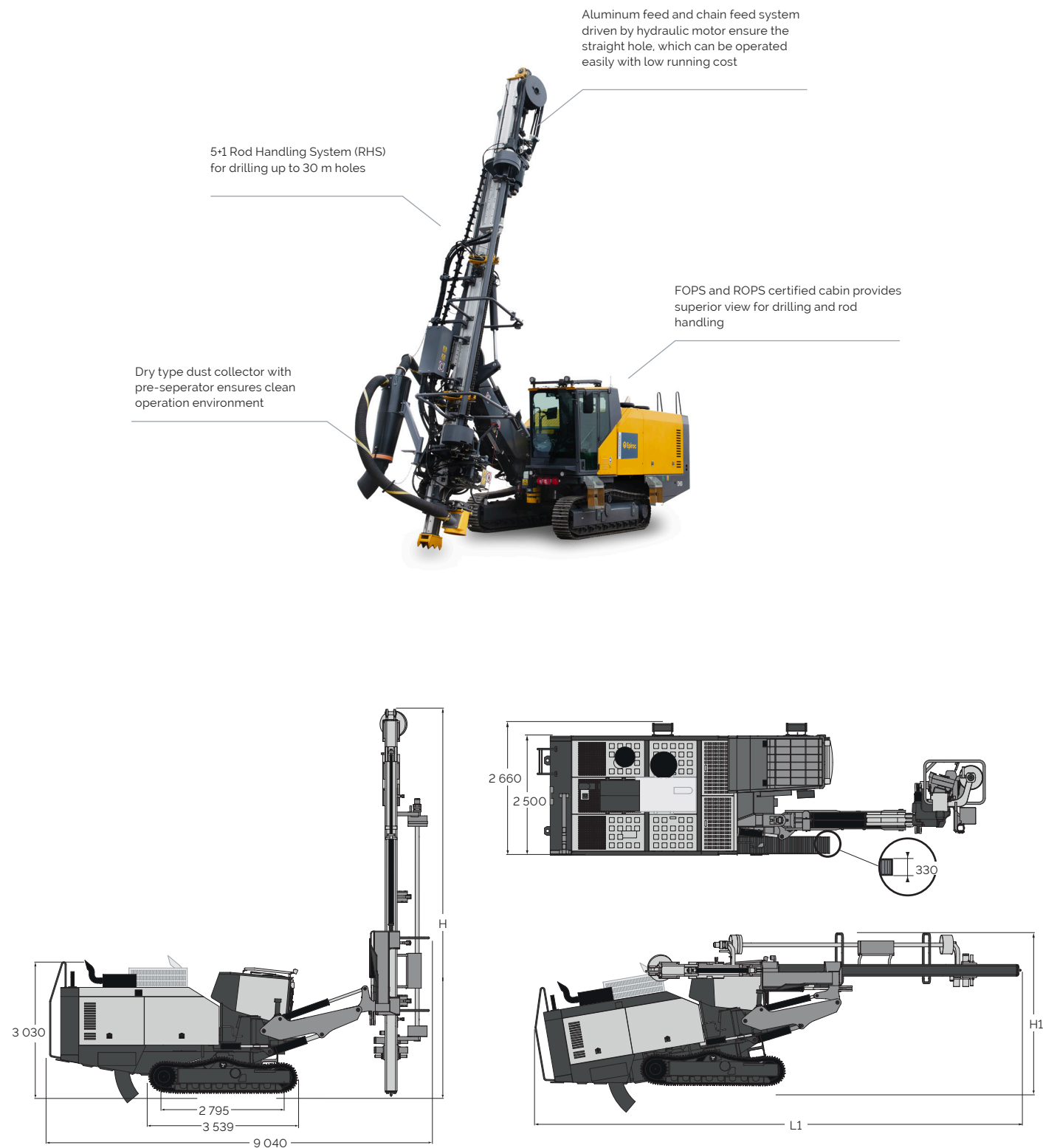
Voltage	24 V
Batteries	2 x 12 V, 200 Ah
Alternator	28 V, 110 A
Work lights, front	4 x 70 W
Work lights, rear	1 x 70 W
Work lights, feed	2 x 70 W

Hole range & depth (recommended)

Recommended DTH hammers and hole range			
PowerROC D60	4' 5" 6"	110–178 mm (4.3–7')	
Hydraulic rod handling system for max hole depth, with 5m tubes		Metric	US
PowerROC D60	Ø 102 mm, Ø 114 mm rod	30 m	98.5'
	Ø 127 mm, Ø 140 mm rod	25 m	82'
Single pass drilling, max hole depth			
PowerROC D60		5 m	16.4'

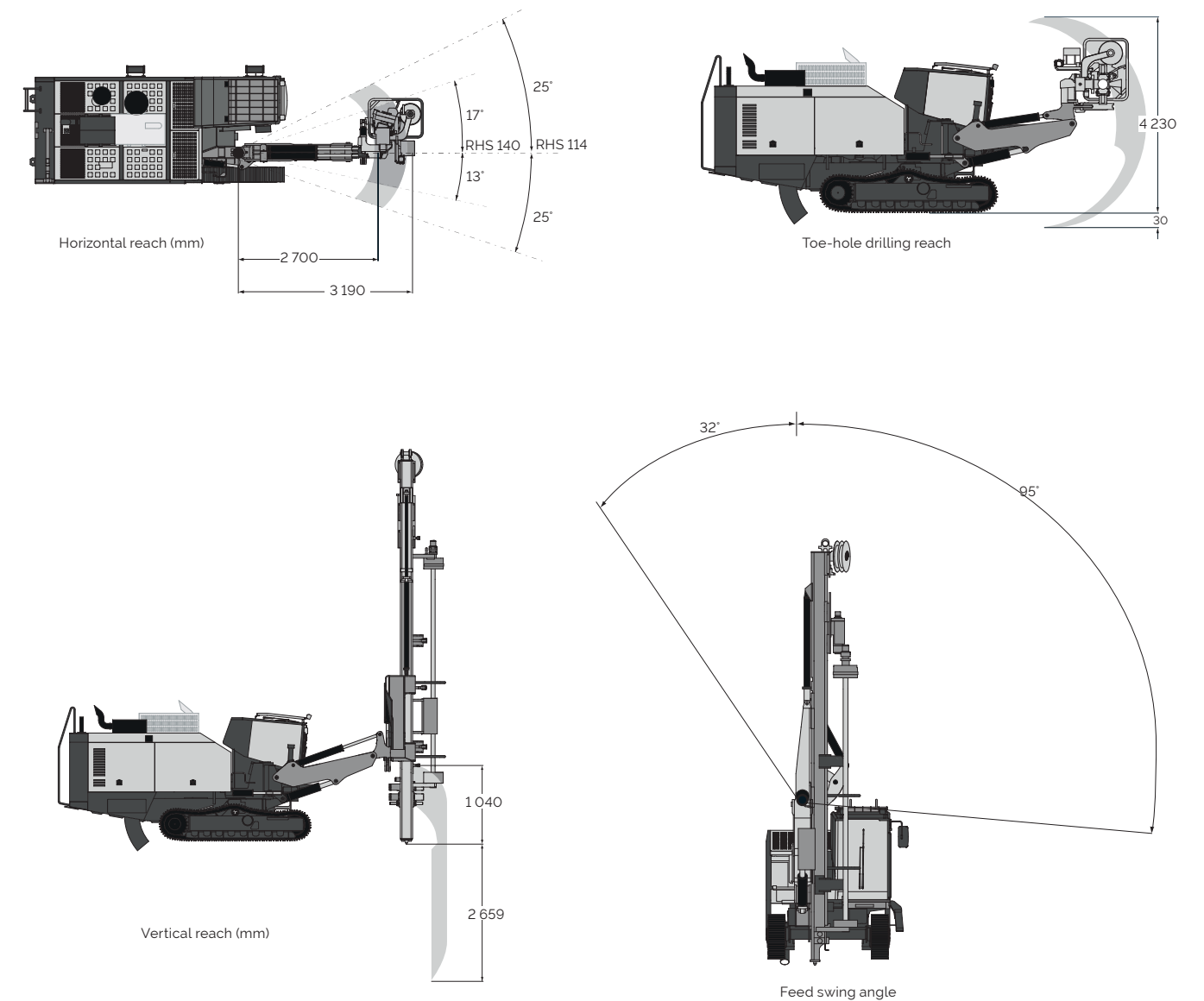
Down-the-hole hammer (to be ordered separately)

Down-the-hole hammer	Top sub thread	Hole range
4'	API 2 3/8" REG pin	110–130 mm (4.3–5.1')
5'	API 3 1/2" REG pin	130–152 mm (5.1–6')
6"	API 3 1/2" REG pin	152–178 mm (6–7')



Transport dimensions

	Metric	US
Height (H1)	3 700 mm	145"
Length (L1)	10 520 mm	415"
Feed height (H)	9 400 mm	370"
Weight (Tier 3)	20 600 kg	45 415 lb
Weight (Tier 4 Final/China IV)	20 800 kg	45 856 lb



Selection of options

Carrier

- Hydraulic support leg
- Electrical refueling pump, fuel
- Electrical refueling pump, hydraulic oil
- Service lamps in canopy
- Cold weather kit, diesel engine pre-heater and compressor regulation heating kit
- LED lights
- Combined warning sound and warning light
- Warning light, beacon type
- Heavy duty air intake filters (only available for Tier 3 version)

Hole and inclination system

- Hole depth and feed inclination system with aiming unit
- Hole Navigation System (HNS)

Digital products

- Fleet monitoring with Fleet+ on My Epiroc

Safety cabin

- Reversing camera with display mounted in the cabin

Feed

- Service winch with jib boom mounted on the feed
- Wide feed foot/dowel
- Rod Handling System 140
- Dimension kit for 76 mm, 89 mm, 102 mm, 114 mm, 127 mm or 140 mm

Lubrication oil, lubrication system and water mist system

- Central lubrication system (CLS)
- Artic hydraulic oil, VG 32
- Tropical hydraulic oil, VG 68
- Standard hydraulic oil, VG 46
- Water mist system, pump, one or two 400 l water tanks
- Arctic-ready water mist system, pump, one or two 400 l water tanks

United in performance. Inspired by innovation.

Performance unites us, innovation inspires us, and commitment drives us to keep moving forward. Count on Epiroc to deliver the solutions you need to succeed today and the technology to lead tomorrow.

epiroc.com

