

# PowerROC T25 DC

Surface drill rig for construction and civil engineering projects,  
small aggregate and limestone quarrying.  
Hole diameter: 51–89 mm (2"–3.5")





## Your path to success

The PowerROC T25 DC utilizes a well-proven design. It is well suited for construction and civil engineering applications, as well as in small aggregate and limestone quarries.

Thanks to the RD 14S/KOP 1540 rock drill and high FAD compressor, this compact workhorse is powerful enough to meet your demands. This rig has the flexibility you need for small aggregate

quarries, construction sites, trench drilling operations, and housing foundations. If you run a small operation, this rig stands ready to be a reliable and dependable business partner.

### ⊕ Main benefits

**Straightforward design** makes it easy to operate and maintain

**Reliable workhorse** with long service intervals which helps to keep down service costs and increase availability.

**High fuel efficiency and fast penetration rate** thank to PowerEco, a fuel economy system, and stable engine - which contribute to cost reduction.

# Straightforward and simple

With a straightforward and robust design, the PowerROC T25 DC ensures high reliability and good accessibility. Our global service network provides you with a quick response no matter where you are.



## + More work – less hassle

The straightforward design ensures ease of operation and maintenance, making drilling and maintenance easier. Simple direct hydraulic control, fewer electric parts and components helps to keep problems and maintenance to a minimum.



## + Environmentally friendly and a friendly environment

We care about the environment both inside and outside the operator cabin. The Cummins Stage V/Tier 4 Final/Tier 3 engine ensures great fuel efficiency without compromising production or the environment. Inside the FOPS and ROPS-certified cabin, a large glass area provides good visibility over the complete drilling process. Thanks to its high ground clearance and compact design, the PowerROC T25 DC is very maneuverable, even in rough conditions.



## + Strengthen your bottom line

The PowerROC T25 DC is engineered and designed to help your operation succeed. Its efficient RD 14S/KOP 1540 rock drill is a simple, solid unit which is easy to use and cheap to maintain. This reliable machine combines low maintenance, high penetration rates, and ease of operation which helps to ensure your business stays profitable.

## A comprehensive service offering

Even the best equipment needs to be serviced regularly to make sure it sustains peak performance. An Epiroc service solution offers peace of mind, maximizing availability and performance throughout the lifetime of your equipment. We focus on safety, productivity and reliability.

By combining genuine parts and an Epiroc service from our certified technicians, we safeguard your productivity – wherever you are.



## Technical specifications

### Main components

- Track frames with single grouser pads, hydraulic track oscillation and two speed traction
- Stage V / Tier 4 Final diesel engine, Cummins B6.7
- Tier 3 diesel engine, Cummins QSB 6.7
- Screw type air compressor
- FOPS and ROPS-certified cabin
- Standard boom system
- Hydraulic motor and chain driven steel feed system
- Carousel type rod handling system
- Hydraulic rock drill
- Dust collection system

### Engine

Cummins turbo charged, diesel engine B 6.7, Stage V / Tier 4 Final	Metric	US
Power rating at 2 300 rpm	129 kW	173 hp
Cummins turbo charged, diesel engine QSB 6.7, Tier 3	Metric	US
Power rating at 2 300 rpm	119 kW	160 hp

### Compressor

Screw type air compressor	Metric	US
Working pressure, max	8.8 bar	128 psi
FAD, at normal working pressure	101 l/s	215 cfm

### Hydraulic system

Hydraulic oil cooler	Metric	US
Max ambient temperature	50°C	122°F

### Feed

Hydraulic motor driven feed with hose reel with centralizer and slide hood	Metric	US
Feed extension	1 500 mm	59'
Feed rate, max	0.6 m/s	118 ft/min
Feed force, max	19.6 kN	4 406 lbf
Tractive pull, max	19.6 kN	4 406 lbf
Total length	7 720 mm	303.9'
Travel length	4 200 mm	165.4'

### Hydraulic rock drill

Rock drill	Impact power	Hydraulic pressure	Impact rate	Max torque	Weight approx
KOP 1540	15 kW (20.1 hp)	145 bar (2 100 psi)	3 000 bpm	451 Nm (332 lbf-ft)(O6)	220 kg (485 lb)
RD 14S	14 kW (18.8 hp)	145 bar (2 100 psi)	2 700 bpm	700 Nm (516 lbf-ft)(O7) 865 Nm (638 lbf-ft)(O8)	220 kg (485 lb)

### Hole range (recommended)

Type of drilling	Drill steel type	Drilling diameter	Max hole depth	Drill steel length
Single pass	T38, T45	51-89 mm (2-3½')	3.6 m (12')	4 270 mm (14') x 1
			15.8 m (52')	4 270 mm (14') x 1 3 050 mm (10') x 4
18.3 m (60')			4 270 mm (14') x 1 3 660 mm (12') x 4	
14.6 m (48')			4 270 mm (14') x 1 3 660 mm (12') x 3	

### Dust collector

	Metric	US
Filter area	14.4 m <sup>2</sup>	154sq.ft
Number of filter elements	6 pcs	6 pcs
Cleaning air pressure, max	4.0 bar	58 psi
Cleaning air volume	17 l/pulse	0.6 cu.ft/pulse

### Electrical system

Voltage	24 V
Batteries	2 x 12 V, 96 Ah
Alternator	24 V, 70 A
Work lights, front	2 x 70 W
Work lights, rear	1 x 70 W
Warning lamp and reverse buzzer (Option)	

### Volumes

	Metric	US
Hydraulic oil tank	200 l	53 US gal
Hydraulic system, total	280 l	74 US gal
Compressor oil	20 l	5.3 US gal
Diesel engine oil	25 l	6.6 US gal
Diesel engine, cooling water	33 l	8.7 US gal
Diesel engine, fuel tank	290 l	76.6 US gal
DEF fluid tank	49 l	13 US gal

# Technical specifications

The rod handling is simple. It features an all mechanical system with direct hydraulic controls.

Hoses are cleverly managed. Percussion hoses are kept separate from other hoses. Visibility is also improved during RHS operations.

Comfortable FOPS and ROPS-certified cabin featuring a direct hydraulic drill control console which is easy to understand. A highly efficient cooling unit is available for tropical climates.

A high volume air compressor provides the RD 14S/KOP 1540 rock drill with all the power it needs.

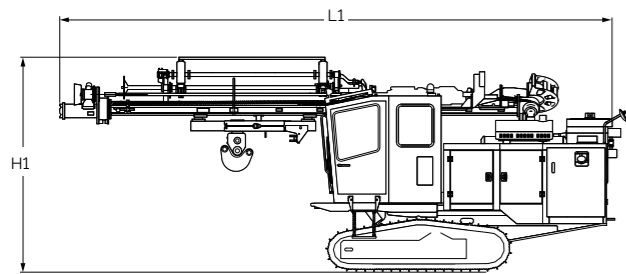
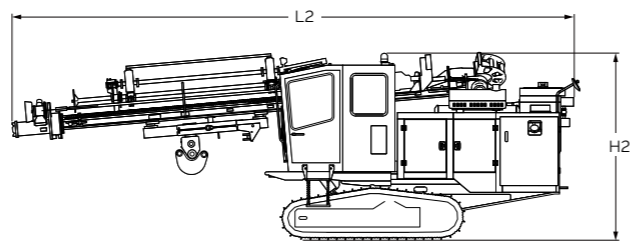
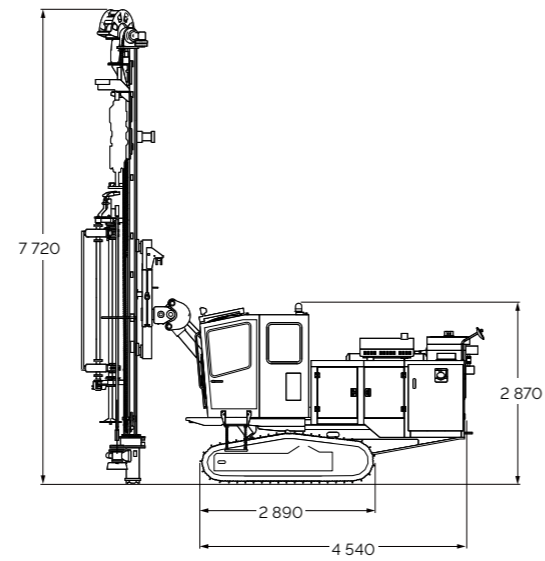


Discover more about the PowerROC T25 DC.



## Transport dimensions

	Metric	US
Height (H1)	3 350 mm	131.9'
Height (H2)	2 980 mm	117.3'
Length (L1)	8 670 mm	341.3'
Length (L2)	8 890 mm	350'
Width(W)	2 350 mm	92.5'
Feed height	7 720 mm	303.9'
Weight (RD 14S rig)	11 300 kg	22 700 lb
Weight (KOP 1540 rig)	11 630 kg	25 640 lb



## Selection of options

### Carrier

- Track chains with triple grouser pads
- Super rotation system
- Rotation speed control in cab
- Impact pressure control in cab

### Safety cabin

- Warning light - BEACON type
- Media player (Radio included for Japan only)
- Driving mirror (L/R)
- Safety alarm light for hydraulic in low level
- Rear view camera system
- LED lamp kit

### Hole measuring systems

- 2D angle indicator
- 3D angle indicator with speed and depth

### Dust control

- Dust pre-separator assembly

### Feed

- Extractor on rock drill
- RHS for T38 with 55 mm coupling
- RHS for T45 SPEEROD
- RHS for T45 with 63 mm coupling
- RHS for T45 with 66 mm coupling

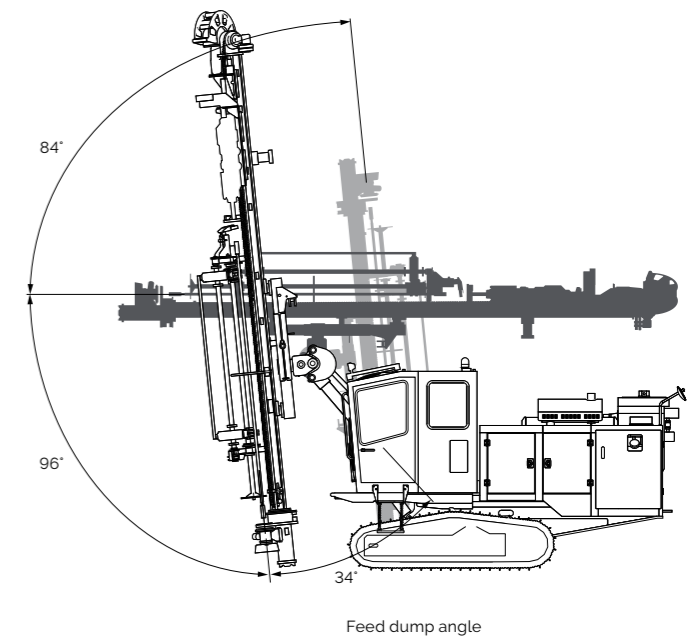
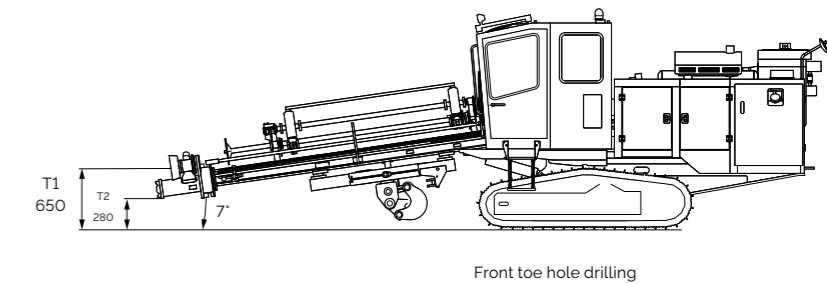
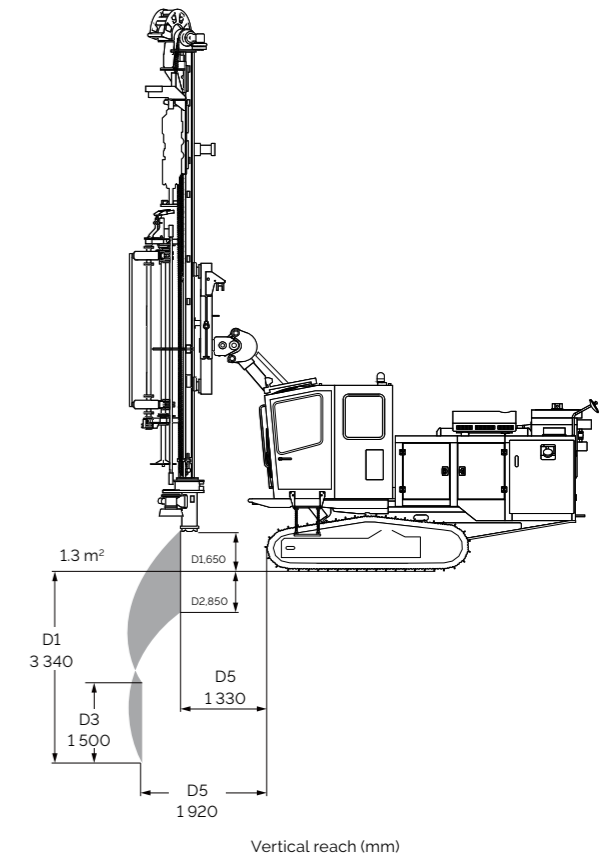
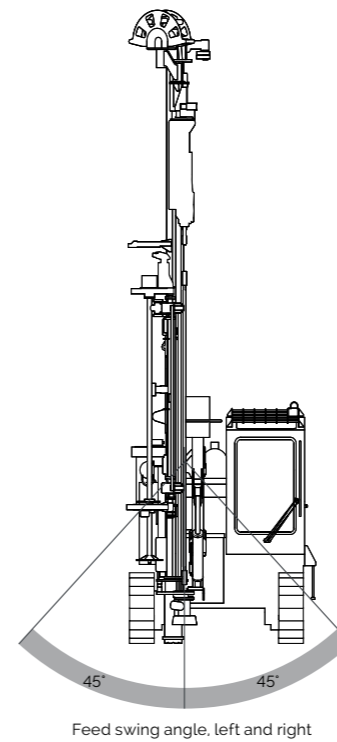
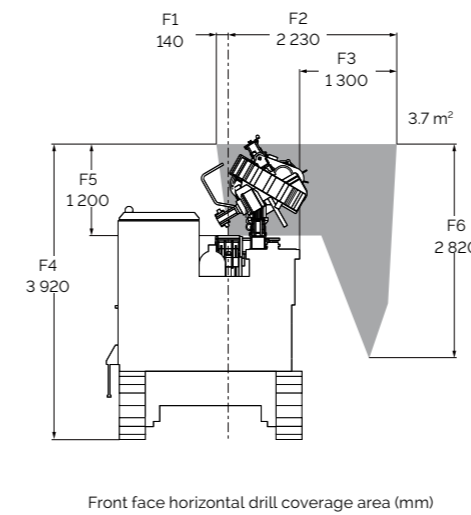
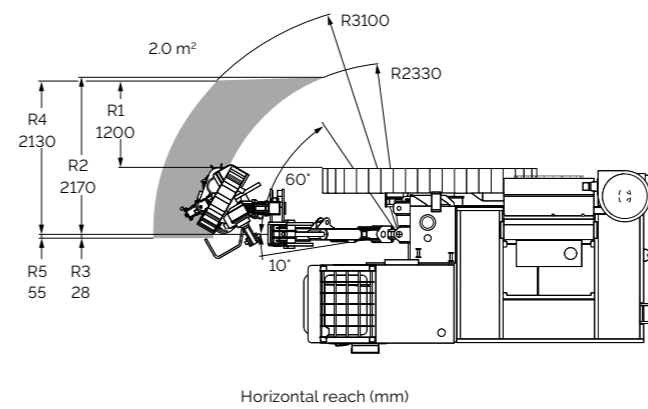
### Water mist system

- Water mist system (150 liters water tank)

### Delivered equipment, not mounted

- Gas charging equipment
- Hydraulic pressure test kit
- Fuel filter upgrade kit

# Technical specifications



# United in performance. Inspired by innovation.

Performance unites us, innovation inspires us, and commitment drives us to keep moving forward. Count on Epiroc to deliver the solutions you need to succeed today and the technology to lead tomorrow.  
**[epiroc.com](https://www.epiroc.com)**

