

Boltec 235 bolting rig

Fully mechanized rock bolting rig for a variety of bolt types and coverage height up to 8.5 m



Make it different when it comes to rock reinforcement

A strong guard that can be used for the toughest rock condition, for your safe working environment in medium size drifts.

+ Main benefits

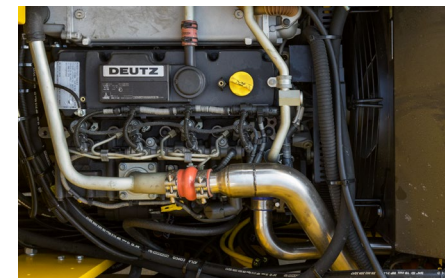
MBU bolting unit for fully mechanized bolt handling for high productivity, carries 10 bolts in its carousel and handles all commonly used bolts in the 1.5 to 2.4 m range.

Direct Control System (DCS) for high productivity and precision also incorporates anti-jamming protection.

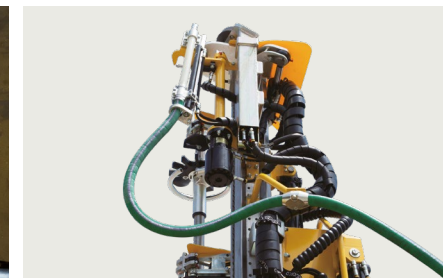
COP RR11, the short, high-frequency hydraulic rock drill provides a high penetration rate with excellent drill steel economy.

Adapted for various bolt types including Swellex, resin and cement rebar, splitset and mechanical anchor.

Mature and easy trouble-shooting DCS system (Direct Control System)



Standard Deutz 4-cylinder, TCD3.6 L4, 55.4 kW, Chinese Stage III, environmental friendly.



Hose injection system for resin cartridges, shooting the cartridges from the operator's platform, injecting through a foldable nozzle in front of the feed.



DC 15 sturdy common carrier. "Open" carrier designed for easy service to reduce down-time.

Heavy duty boom BUT 35BS for direct fast and accurate positioning between holes

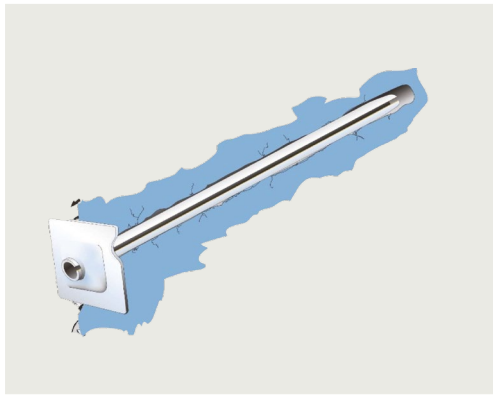
Sturdier new designed MBU (Mechanical Bolting Unit) to handle all bolt types and fast and easy to change between bolt types

Strong DC 15 carrier, with more engine options to meet your different application requirements

COP RR11 rock drill, a short and light rock drill to achieve high efficient drilling.

Safety is guaranteed by excellent and various capabilities

Operator is always protected. Risk of rock falling is minimized since each bolt is installed immediately and stably.



+ Full range of bolt types

- For mechanized installation of all commonly used types of rock bolts.
- Splitset: Simple installation; immediate support action after installation; easy application of wire mesh
 - Resin rebar: a competent and durable reinforcement system; high load bearing capacity in hard rock conditions; can be used in permanent installations
 - Swellex: rapid and simple installation; immediate support action after installation; can be used in a variety of ground conditions
 - Mechanical anchored rock bolts: relatively inexpensive; bolt gives immediate support action after installation; high bolt loads can be achieved



+ COP R type rock drill

- What differentiates the COP RR11 from other rock drills is its small size (both short and light). The combination of its size and high frequency makes it an optimal rock drill in loose to medium hard rock
- A powerful, step less variable and reversible rotation motor gives high torque for efficient drilling, and minimizes the risk for jamming



+ Operator station

Excellent visibility, logical control layout, ensure improved productivity and safe operation.



A comprehensive service offering

Even the best equipment needs to be serviced regularly to make sure it sustains peak performance. An Epiroc service solution offers peace of mind, maximizing availability and performance throughout the lifetime of your equipment. We focus on safety, productivity and reliability.

By combining genuine parts and an Epiroc service from our certified technicians, we safeguard your productivity – wherever you are.

Technical specifications

Rock drill/drill system

- COP RR11
- Shank adapter R32
- Height over drill centre 77 mm
- Length 735 mm
- Impact power, max 11 kW
- Impact rate 100 Hz
- Hydraulic pressure, max 200 bar
- Rotation system separate rotation
- Rotation torque, max 225 Nm
- Lub. air consumption at 2 bar 6 l/s
- Weight 75 kg
- Sound level <128 dB(A)
- 润滑油低液位报警
- Hole blowing kit

Bolting unit

- Mechanical Bolt Unit, MBU
- Magazine capacity 10 bolts
- Max. size of face plates, rectangular 150x150 mm
- Max. size of face plates, round Ø 200 mm
- Bolt length 1.5–2.4 m
- Adapted for all commonly used bolt types on the market, see options
- Drill steel and coupling according to MBU, delivered with rig
- Chain feed adapted according to bolt length

Boom

- BUT 35BS
- Feed extension 0-542 mm
- Boom extension 1 600 mm
- Feed roll-over 360°
- Max. lifting angle +65°/-30°
- Max. swinging angle ±45°
- Weight, boom only 2 870 kg

Hydraulic system

- Hydraulic pumps 1 unit
- Pumps unloaded at start
- System pressure 150–230 bar
- Hydraulic oil tank, volume max/min 195/167 l
- Low oil level indicator including shut down
- Oil temperature gauge on oil tank
- Filtration 16 µm
- Water-cooled oil cooler
- Mineral hydraulic oil
- Oil filter indicator

Air system

- Compressor Atlas Copco LE10
- Capacity, max at 7 bar 15.7 l/s
- Air pressure gauge
- Air receiver 80 l

Electrical system

- Total installed power 66 kW
- Main motor 55 kW
- Compressor motor 7.5 kW
- Voltage 380–1 000 V
- Frequency 50–60 Hz
- Starting method star/delta (direct start at 1 000 V)
- Electronic overload protection
- Percussion hour meters in electrical cabinet
- Digital volt/ampere meter in electric cabinet
- Phase sequence indicator
- Earth fault indicator
- Battery charger
- Transformer 4 kVA
- Spot light 1x70 W, 24 V
- Cable reel diameter 1 400 mm

Carrier

- Deutz TCD3.6 L4, 4-cylinder water-cooled Chinese Stage III approved diesel engine
- Power rating at 2 300 rpm 55.4 kW
- Torque at 1 300 rpm 390 Nm
- Articulated steering ±41° steering angle
- Fixed seat for tramming
- Four-wheel drive
- Hydrostatic power steering system
- Hydraulic torque converter Clark 12000
- Front axle Dana 123
- Rear axle Dana 123, ±6° oscillation
- Automatic differential lock on rear axle
- Tyres 12.00 x R20
- Clearance outside axles 15°
- Hydraulic jacks, front 2 extendable
- Hydraulic jacks, rear 2
- Service brakes 2 separate circuits
- Emergency and parking brakes SAHR
- Fuel tank, volume 60 l
- Silencer
- Electric system 24 V
- Batteries 2 x 70 Ah
- Tramming lights LED 8 x 25 W, 24V DC
- Working lights LED 4 x 50 W, 24V DC
- Fire extinguisher
- Central lubrication system
- Spirit level
- Gradeability at max. load on drive wheels 1:4
- Horn, beacon and reverse alarm

Water system

- Pump Lowara 5SV11
- Capacity, max at 7 bar boost 80 l/min
- Min water inlet pressure 2 bar

Technical specification

Optional equipment

Bolting unit/Boom

- Swellex, Mn 12, Mn 16
- Split-Set, SS39, SS46, including COP 1028 rock drill
- Mechanical anchor bolts, including boltrotator
- Rebar - manual resin cartridge, including boltrotator
- Hose injection system for resin cartridges
- Dual bolt lengths
- Dual bolt types
- Extension drilling kit

Water system

- Water hose reel

Carrier

- Fire suppression system
 - Manual release
 - Automatic (Checkfire)
- Deutz D914 L02 2V, 4-cylinder water-cooled diesel engine 55kW, EU Stage IIIA
- Deutz BF4L 914, 4-cylinder water-cooled diesel engine 55kW, EU Stage IIIA
- Spot lights, extra

Recommended Drill Steel Length

Maximum bolt length, mm	Drill steel length, mm	Drill steel length, mm	Drill steel length, mm	Total length, mm
	COP RR11 R32	COP RR11 R32E	COP RR11 R32F	
1 510	1 830 - 1 885	1 740 - 1 795	2 035 - 2 090	2 918
1 870	2 190 - 2 245	2 100 - 2 155	2 395 - 2 450	3 278
2 050	2 370 - 2 425	2 280 - 2 335	2 575 - 2 630	3 458
2 170	2 490 - 2 545	2 400 - 2 455	2 695 - 2 750	3 578
2 470	2 790 - 2 845	2 700 - 2 755	2 995 - 3 050	3 878

Electrical system

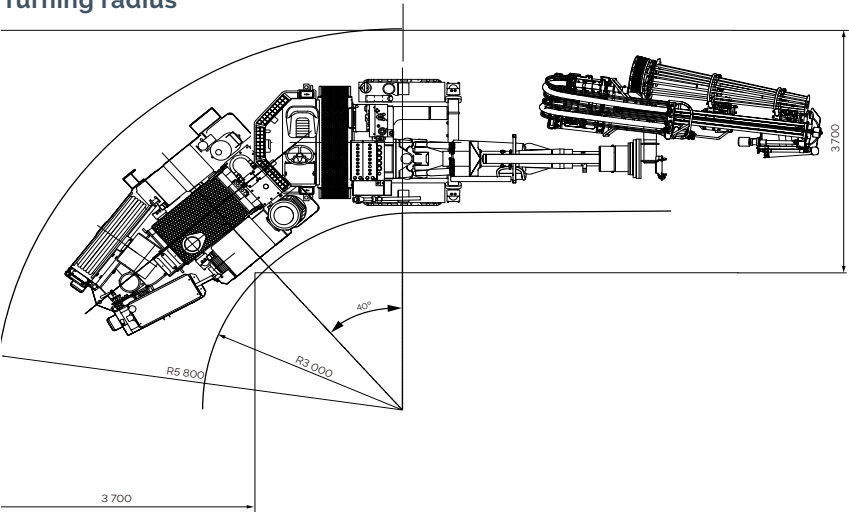
- Electric cable Buflex
- Plug
- Socket
- Connector
- Switch gear
- Electric outlet for accessories, 12 A

Miscellaneous

- Ni-Cr plated piston rods for high corrosion situation use.
- Manual lubrication kit
- Rig washing kit with water hose and reel
- Illuminated stairs
- Boots washing kit
- KA Certificate (Safety Certificate of Approval for Mining Products in China, selection on request)

Measurements

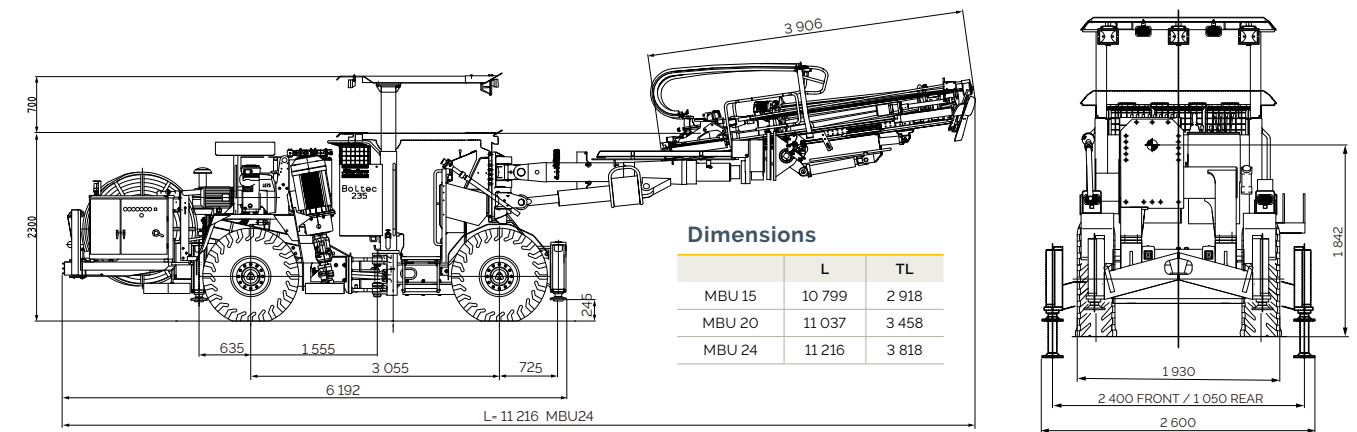
Turning radius



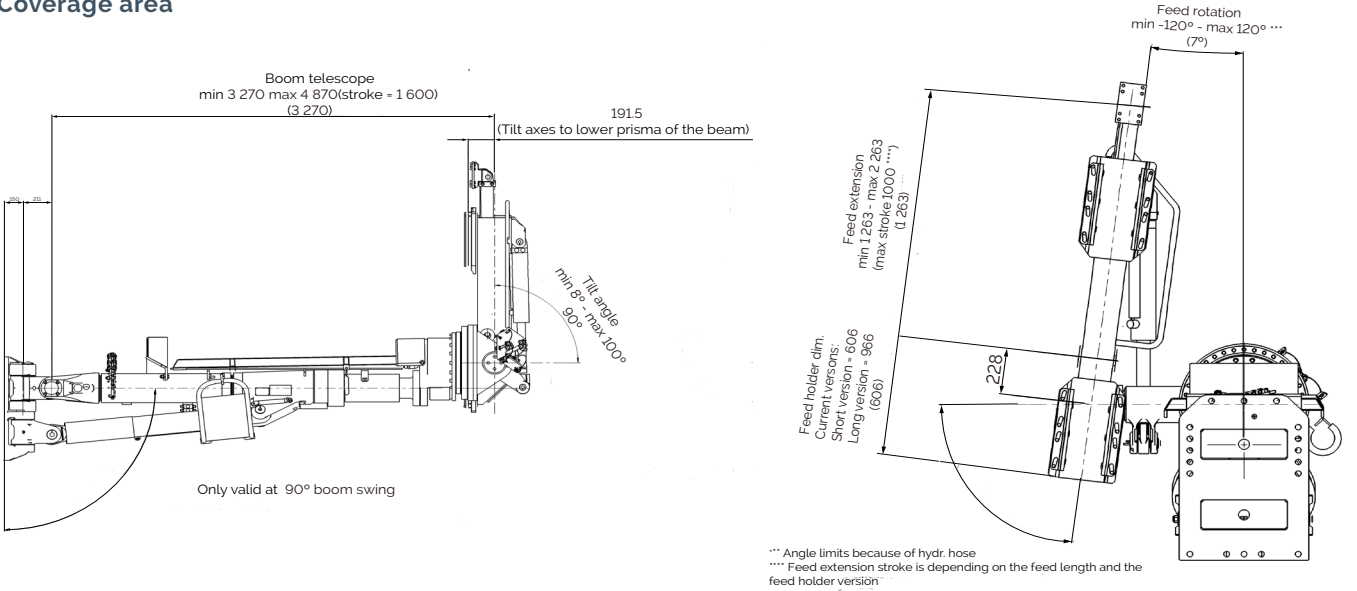
Technical specification

Measurements

Length / Height



Coverage area



Dimensions

mm		
	Width	1 930/2 205 with bolt rack
	Height roof up/down	3 000/2 300
	Length with MBU 24 feed	11 216
	Ground clearance	200
	Turning radius, outer	5 800
	Turning radius, inner	3 000

Weight

gross weight, depending on configuration		
kg	Total	17 500
	Boom side	12 500
	Engine side	5 000

Tramming speed

km/h	On flat ground (rolling resistance 0.05)	> 12
	On incline 1:8	> 4.5

Recommended cable size and length

Voltage	Type	Dimension, mm ²	Diameter, mm	Length, m
< 440 V	Buflex	3x50+3G10	33	125
> 500 V	Buflex	3x35+3G6	24	145

Recommendations are given for surrounding temperature of 40 °C. and up to a height of 2000m.



Epiroc (Nanjing) Construction & Mining Equipment Ltd., Nanjing China. All product names in this publication are trademarks of Epiroc. Any unauthorized use or copying of the content for any part thereof is prohibited. Epiroc reserves the right to change without notice. Consult your Epiroc Customer Representative for specific information.

United in performance. Inspired by innovation.

Performance unites us, innovation inspires us, and commitment drives us to keep moving forward. Count on Epiroc to deliver the solutions you need to succeed today and the technology to lead tomorrow.
epiroc.com

