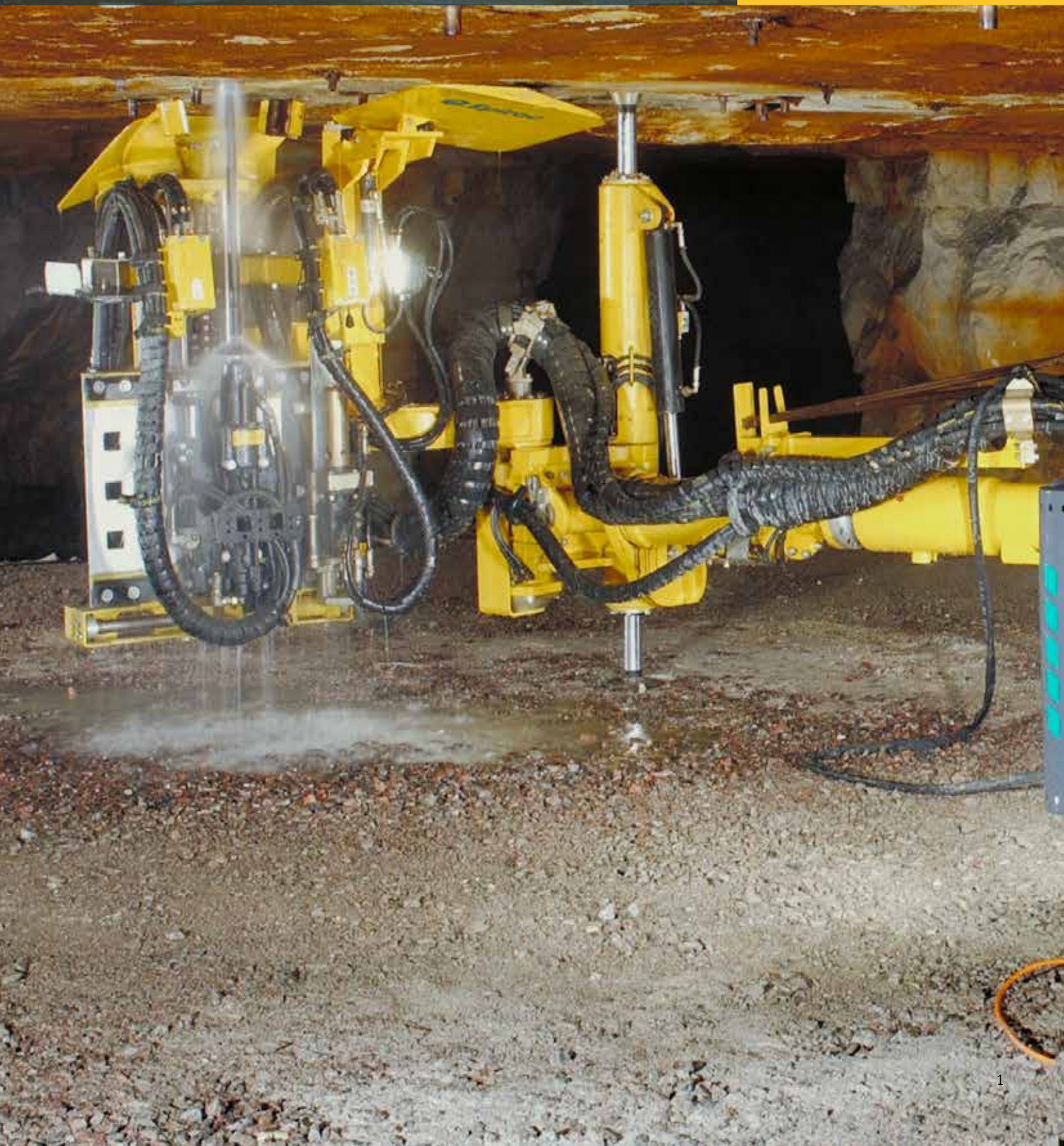


Boltec SL

Semi-mechanized rock bolting rig for bolting applications in low profile mining methods



Making mining safe

Boltec SL is a semi-mechanized rock bolting rig suitable for installation of bolt lengths of 1.6-1.8 m into low profile mining roof heights of as low as 1.8 m.

+ Main benefits

High performance and long service life thanks to the purpose built COP RR11 rock drill for small hole diameter drilling needed for bolting processes

Simple and flexible operations with the robust bolting unit

Four wheel drive articulated carrier design featuring commonalities with Boomer S1 L and Cabletec SL, suited for working in narrow tabular type ore bodies



Operator panel is designed such the operator performs drilling from behind the support legs of the machine.



Operator driving position is under a FOPS certified protective roof.



The COP RR11 rock drill is purpose designed for bolt hole drilling, delivering up to 11 kW of output power.



Safe bolting with quality in focus

Safety and quality of bolt installation is our focus. The standard and optional features of Boltec SL ensures operator safety, comfort and guarantees a job well done.



+ Safety

Mechanized bolting reduces the operator exposure to potentially dangerous areas of unsupported ground. All drilling and bolt installation is controlled from behind the support jacks of the machine.

+ Bolt installation quality

Mechanized bolting typically holds a much higher installation quality and consistency than manual installation. Bolt angles, bolt spacing, controlled grout ratios, installation pressures, and bolt numbers are just some of the data that can be collected or recorded.

+ Optional one bolt full mechanized installation

With use of the super short COP 628 rock drill equipped LBU bolting unit, an operator is able to drill and install a rock bolt in a fully mechanized fashion. Removing the operator from potentially dangerous ground during all stages of the bolting operation. New bolts are loading into the bolting unit by swinging the bolting unit back towards the carrier, allowing the operator to remain behind the last row of installed bolts (see photo opposite).



A comprehensive service offering

Even the best equipment needs to be serviced regularly to make sure it sustains peak performance. An Epiroc service solution offers peace of mind, maximizing availability and performance throughout the lifetime of your equipment. We focus on safety, productivity and reliability.

By combining genuine parts and an Epiroc service from our certified technicians, we safeguard your productivity – wherever you are.

Technical specifications

● = Standard ○ = Option

Rock drill

COP RR11, 11 kW output @ 100Hz impact frequency	●
COP 628 (with LBU bolting unit), 6 kW output @ 100 Hz impact frequency	○
Rock drill lubrication, air dryer system	○
Air-water mist flushing, external water, internal air, hydraulic oil cooled by air fan	○
Air-water mist flushing, external water, internal air, hydraulic oil cooled by water	○
Air-water mist flushing, internal water, internal air, hydraulic oil cooled by air fan	○
Rock drill lubrication warning kit	●
Rock drill lubrication surveillance system	●
Hole blowing kit	●

Boom

BUT 32SL	
Boom extension 1250 mm	
Boom rotation 180°	
Max. lifting angle +65°/-30°	
Max. swinging angle +/- 45°	
Automatic boom lubrication system, rear part	○

Bolting unit

MBU-SL (with COP RR11) for 1.6 m or 1.8 m bolt length, semi-mechanized	
Size of face plates, round, diameter, max Ø 200 mm	
LBU-SL (with COP 628) for 1.6 m bolt length, single bolt full mechanized	○
Swellex, Mn 12, Mn 16, Mn 24	○
Mechanical anchor bolts 20 mm, expansion shell	○
Rebar 20 or 25mm - manual resin/cement cartridge	○
Rebar - resin cartridge injection system, automatic, including boltrotator	○

Positioning unit

Hydraulic stinger, stroke up 400 mm, stroke down 600 mm, max 80 kN	
Tilt angle +15°/-90°	
Feed extension, max 250 mm	
Swing arm rotation +114°/-114°	

Rock drill

Total installed power 63 kW	●
Main motors 1 x 55 kW	●
Voltage 380 - 690 V	●
Frequency 50 Hz	○
Frequency 60 Hz	○
Starting method - star/delta (380-690 V)	○
Thermal overload protection for electric motors	●
Digital volt/ampere meter in electrical cabinet	●
Phase sequence and earth fault indicator	●
Battery charger	●
Cable reel with limiting switch	●
Electrical outlet, main supply voltage 16 Amp 3-phase (16 A or 32 A socket size) - not for 1 000 V	○
PC4 or PC5 plug/socket	○
Cable reel, inner/outer diameter 500/740 mm	○
Spotlight, 1 x 70 W, 24 V	○
Illuminated stairs for platform (LED)	○
Soft start of main electrical motor (not for 1 000 V or CSA)	○

Air/water system

Compressor: Atlas Copco LE 7	
Compressor capacity max 11.7 l/s at 7 bar	
Hydraulic water booster pump capacity at 7.5 bar, 75 l/min	
Minimum water inlet pressure 2 bar	
Water hose reel, including water hose	○

Hydraulic system

Hydraulic pumps: one variable pump for percussion & positioning plus one constant flow pump for rotation	●
Pumps unloaded at start	●
Filtration 16 µm	●
System pressure 150-230 bar	●
Hydraulic oil tank, volume max level 140 l	●
Low oil level indicator (incl. shut down when power supply is connected)	●
Oil temperature meter on oil tank	●
Filtration, 20 micron absolute	●
Oil filter indicator	●
Water cooled oil cooler, stainless steel	●
Mineral hydraulic oil	●
Electric oil filling pump	●
Ni-Cr plated piston rods	○

Control system

Electrical pilot system with controls for positioning, drilling and bolting in a portable control panel	●
---	---

Carrier

Deutz TD 2011 L04 55 kW 4 cylinder Tier 3 / Stage IIIA diesel engine	●
Torque at 1800 rpm, 250 Nm	●
Adjustable seat for tramping	●
Articulated steering with ±35° steering angle	●
Hydrostatic transmission	●
Four wheel drive	●
Front axle, Dana 112	●
Rear axle, Dana 311/112, with integrated transmission drop box, oscillation ±6°	●
Automatic differential lock on front axle, limited slip	●
Service brakes: two separate circuits, hydraulically applied fully enclosed wet disk	●
Emergency and parking brakes: SAHR (Spring Applied Hydraulic Released)	●
Tyres front and rear, 300 R15	●
Front and rear hydraulic jacks	●
Fuel tank volume 60 l	●
Electrical system 24 V DC	●
Batteries 2 x 12 V, 70 Ah	●
Tramming lights, rear 4x22 W LED	●
Tramming lights, forward 4 x 22 W LED	●
Working lights 2x320 W LED 24V DC	●
Spirit level	●
Central grease point for carrier lubrication	●
Hand held fire extinguisher	●
Fire suppression system ANSUL – manual release	○
Fire suppression system ANSUL – automatic release (checkfire)	○
Gradeability at max load on drive wheels: 1:4	●

Technical specifications

● = Standard ○ = Option

Operator station

FOPS certified telescopic protective roof	●
---	---

Tramming speed

On flat ground (rolling resistance 0.05)	>14.0
On incline 1:8	>4.5

Dimensions

Width, tramming	2 480 mm
Height, protective roof, adjustable FOPS	1 300/1 770 mm
Height, carrier	1 300 mm
Length, tramming	10 200 mm
Turning radius, inner	3 550 mm
Turning radius, outer	6 180 mm
Ground clearance	260 mm

Weight

Total	12 800 kg
Boom side	8 500 kg
Engine side	4 300 kg

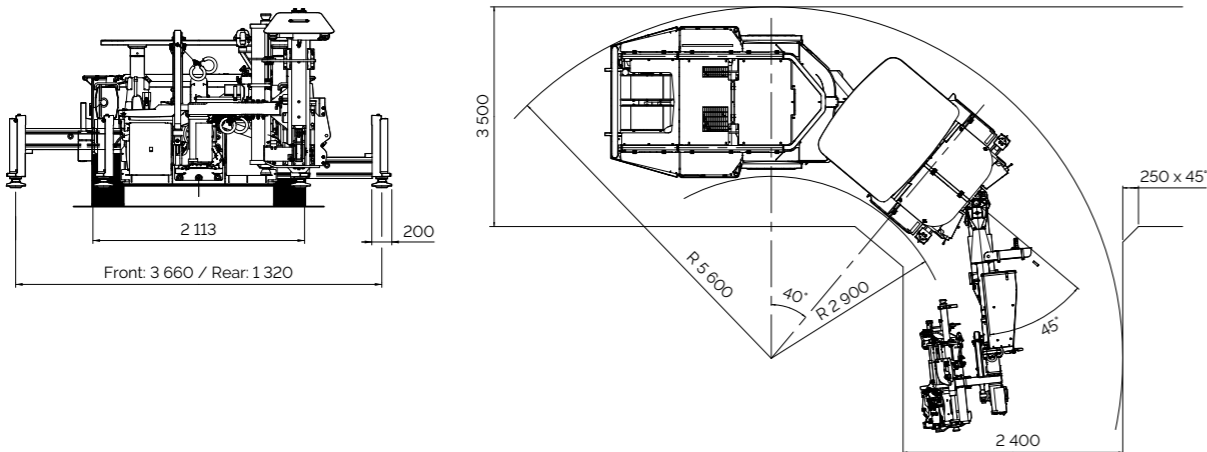
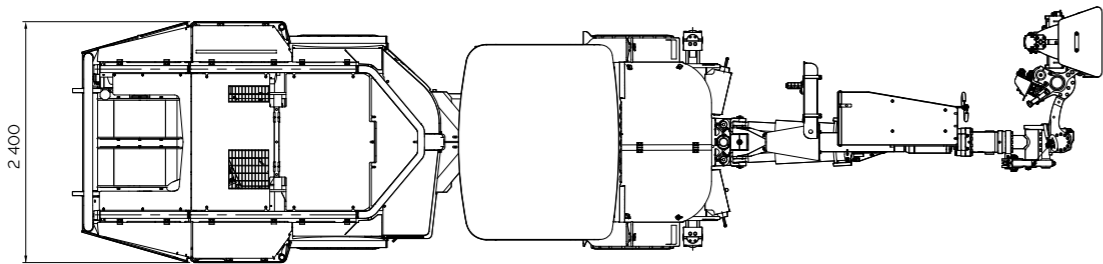
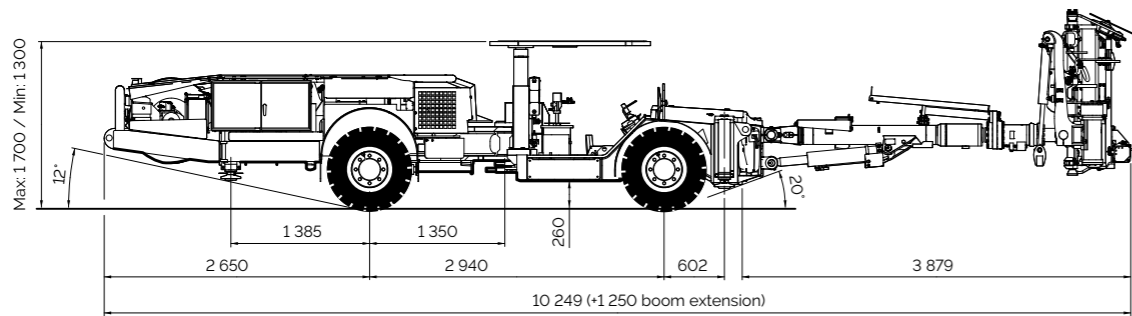
Recommended cable sizes and lengths

Voltage	Dimension, mm ²	Diameter, mm	Length, m
380 - 440 V	3x50+3G10+2x1.5	29.0 - 32.0	80
500 - 1000 V	3x35+3G6+2x1.5	25.0 - 28.0	90

Recommendations are given for surrounding temperature of 40°C.

Boltec SL – MBU

Measurements in millimeters

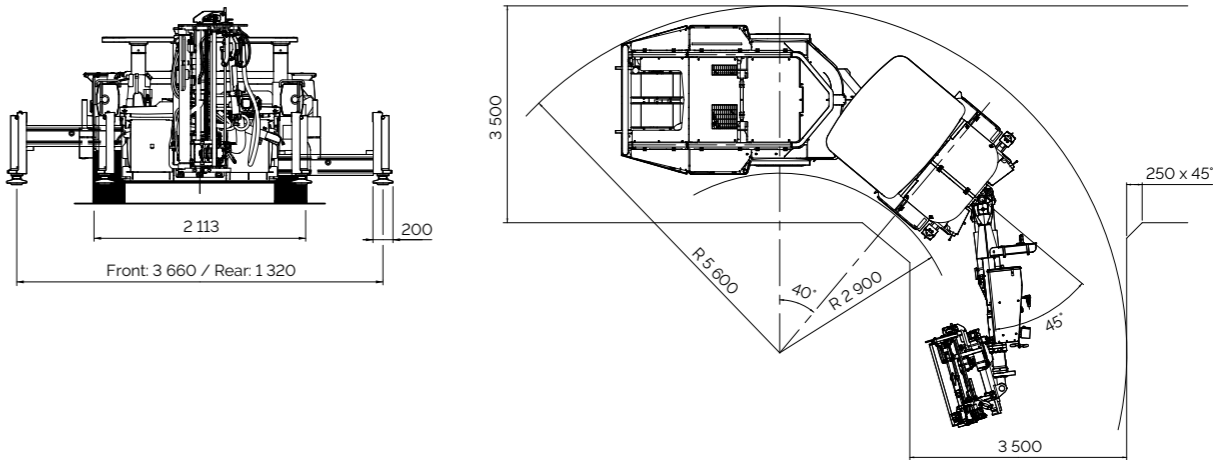
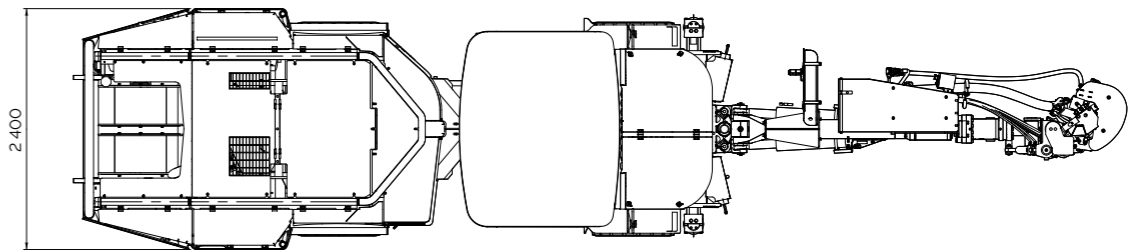
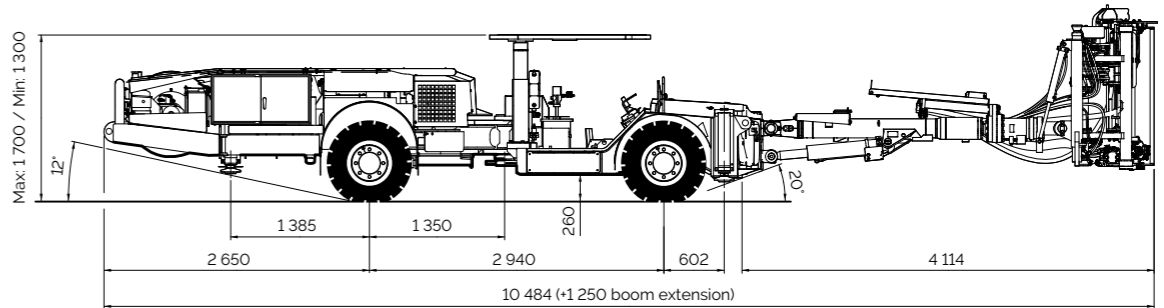


Technical specifications

● = Standard ○ = Option

Boltec SL – LBU

Measurements in millimeters





9869 0176 01 2022 01 Örebro, Sweden. Legal Notice © Copyright 2022. Epiroc Rock Drills AB, Örebro, Sweden. All product names in this publication are trademarks of Epiroc. Any unauthorized use or copying of the contents, or any part thereof is prohibited. Illustrations and photos may show equipment with optional extras. No warranty is made regarding specifications, or otherwise. Specifications and equipment are subject to change without notice. Consult your Epiroc Customer Center for specific information.

United in performance. Inspired by innovation.

Performance unites us, innovation inspires us, and commitment drives us to keep moving forward. Count on Epiroc to deliver the solutions you need to succeed today and the technology to lead tomorrow.
epiroc.com

